

E2F-4 (Acetyl Lys96) Polyclonal Antibody

Catalog # AP63222

Product Information

Application	WB
Primary Accession	Q16254
Reactivity	Human, Mouse, Rat
Host	Rabbit
Clonality	Polyclonal
Calculated MW	43960

Additional Information

Gene ID	1874
Other Names	E2F4; Transcription factor E2F4; E2F-4
Dilution	WB~~Western Blot: 1/500 - 1/2000. ELISA: 1/20000. Not yet tested in other applications.
Format	Liquid in PBS containing 50% glycerol, 0.5% BSA and 0.09% (W/V) sodium azide.
Storage Conditions	-20°C

Protein Information

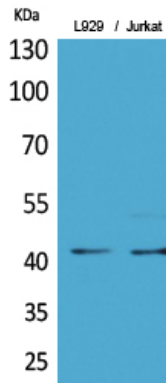
Name	E2F4
Function	Transcription activator that binds DNA cooperatively with DP proteins through the E2 recognition site, 5'-TTTC[CG]CGC-3' found in the promoter region of a number of genes whose products are involved in cell cycle regulation or in DNA replication. The DRTF1/E2F complex functions in the control of cell-cycle progression from G1 to S phase. E2F4 binds with high affinity to RBL1 and RBL2. In some instances can also bind RB1. Specifically required for multiciliate cell differentiation: together with MCIDAS and E2F5, binds and activate genes required for centriole biogenesis.
Cellular Location	Nucleus.
Tissue Location	Found in all tissue examined including heart, brain, placenta, lung, liver, skeletal muscle, kidney and pancreas

Background

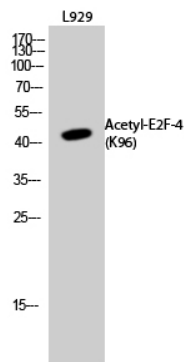
Transcription activator that binds DNA cooperatively with DP proteins through the E2 recognition site,

5'-TTTC[CG]CGC- 3' found in the promoter region of a number of genes whose products are involved in cell cycle regulation or in DNA replication. The DRTF1/E2F complex functions in the control of cell-cycle progression from G1 to S phase. E2F4 binds with high affinity to RBL1 and RBL2. In some instances can also bind RB1. Specifically required for multiciliate cell differentiation: together with MCIDAS and E2F5, binds and activate genes required for centriole biogenesis.

Images



Western Blot analysis of L929, Jurkat cells using Acetyl-E2F-4 (K96) Polyclonal Antibody.. Secondary antibody was diluted at 1:20000



Western Blot analysis of L929 cells using Acetyl-E2F-4 (K96) Polyclonal Antibody. Secondary antibody was diluted at 1:20000

Please note: All products are 'FOR RESEARCH USE ONLY. NOT FOR USE IN DIAGNOSTIC OR THERAPEUTIC PROCEDURES'.