

Cleaved-SUMO-2/3 (G93) Polyclonal Antibody

Catalog # AP63150

Product Information

Application	WB, E, CoIP
Primary Accession	P61956
Reactivity	Human, Mouse, Rat
Host	Rabbit
Clonality	Polyclonal

Additional Information

Other Names	SUMO2; SMT3A; SMT3H2; Small ubiquitin-related modifier 2; SUMO-2; HSMT3; SMT3 homolog 2; SUMO-3; Sentrin-2; Ubiquitin-like protein SMT3A; Smt3A
Dilution	WB--Western Blot: 1/500 - 1/2000. ELISA: 1/20000. Not yet tested in other applications. E--N/A CoIP--N/A
Format	Liquid in PBS containing 50% glycerol, 0.5% BSA and 0.09% (W/V) sodium azide.
Storage Conditions	-20°C

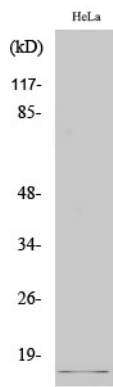
Protein Information

Background

Ubiquitin-like protein that can be covalently attached to proteins as a monomer or as a lysine-linked polymer. Covalent attachment via an isopeptide bond to its substrates requires prior activation by the E1 complex SAE1-SAE2 and linkage to the E2 enzyme UBE2I, and can be promoted by an E3 ligase such as PIAS1-4, RANBP2, CBX4 or ZNF451 (PubMed:[26524494](#)). This post-translational modification on lysine residues of proteins plays a crucial role in a number of cellular processes such as nuclear transport, DNA replication and repair, mitosis and signal transduction. Polymeric SUMO2 chains are also susceptible to polyubiquitination which functions as a signal for proteasomal degradation of modified proteins (PubMed:[18408734](#), PubMed:[18538659](#), PubMed:[21965678](#), PubMed:[9556629](#)). Plays a role in the regulation of sumoylation status of SETX (PubMed:[24105744](#)).

Images

Western Blot analysis of various cells using
Cleaved-SUMO-2/3 (G93) Polyclonal Antibody



Please note: All products are 'FOR RESEARCH USE ONLY. NOT FOR USE IN DIAGNOSTIC OR THERAPEUTIC PROCEDURES'.