

Cleaved-KLK11 (I54) Polyclonal Antibody

Catalog # AP63130

Product Information

Application	WB, E
Primary Accession	Q9UBX7
Reactivity	Human, Rat, Mouse
Host	Rabbit
Clonality	Polyclonal
Calculated MW	31059

Additional Information

Gene ID	11012
Other Names	KLK11; PRSS20; TLSP; Kallikrein-11; hK11; Hippostasin; Serine protease 20; Trypsin-like protease
Dilution	WB~~Western Blot: 1/500 - 1/2000. ELISA: 1/10000. Not yet tested in other applications. E~~N/A
Format	Liquid in PBS containing 50% glycerol, 0.5% BSA and 0.09% (W/V) sodium azide.
Storage Conditions	-20°C

Protein Information

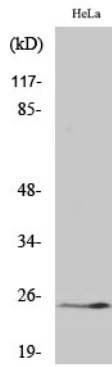
Name	KLK11
Synonyms	PRSS20, TLSP
Function	Possible multifunctional protease. Efficiently cleaves 'bz-Phe-Arg-4-methylcoumaryl-7-amide', a kallikrein substrate, and weakly cleaves other substrates for kallikrein and trypsin. Cleaves synthetic peptides after arginine but not lysine residues.
Cellular Location	[Isoform 1]: Secreted.
Tissue Location	Expressed in brain, skin and prostate. Isoform 1 is expressed preferentially in brain. Isoform 2 is expressed in prostate Present in seminal plasma at concentrations ranging from 2 to 37 microg/mL (at protein level).

Background

Possible multifunctional protease. Efficiently cleaves 'bz-Phe-Arg-4-methylcoumaryl-7-amide', a kallikrein

substrate, and weakly cleaves other substrates for kallikrein and trypsin. Cleaves synthetic peptides after arginine but not lysine residues.

Images



Western Blot analysis of various cells using
Cleaved-KLK11 (I54) Polyclonal Antibody

Please note: All products are 'FOR RESEARCH USE ONLY. NOT FOR USE IN DIAGNOSTIC OR THERAPEUTIC PROCEDURES'.