

SOST Antibody (Center)

Purified Rabbit Polyclonal Antibody (Pab)
Catalog # AP6261c

Product Information

Application	IHC-P, WB, E
Primary Accession	Q9BQB4
Reactivity	Human
Host	Rabbit
Clonality	Polyclonal
Isotype	Rabbit IgG
Antigen Region	134-163

Additional Information

Other Names	Sclerostin, SOST
Target/Specificity	This SOST antibody is generated from rabbits immunized with a KLH conjugated synthetic peptide between 134-163 amino acids from the Central region of human SOST.
Dilution	IHC-P~~1:100~500 WB~~1:1000 E~~Use at an assay dependent concentration.
Format	Purified polyclonal antibody supplied in PBS with 0.09% (W/V) sodium azide. This antibody is prepared by Saturated Ammonium Sulfate (SAS) precipitation followed by dialysis against PBS.
Storage	Maintain refrigerated at 2-8°C for up to 2 weeks. For long term storage store at -20°C in small aliquots to prevent freeze-thaw cycles.
Precautions	SOST Antibody (Center) is for research use only and not for use in diagnostic or therapeutic procedures.

Protein Information

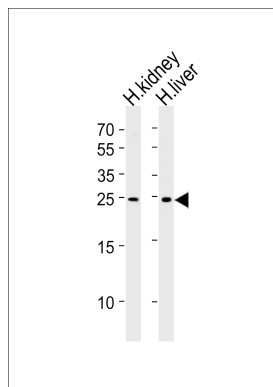
Background

Sclerostin is a secreted glycoprotein with a C-terminal cysteine knot-like (CTCK) domain and sequence similarity to the DAN (differential screening-selected gene aberrative in neuroblastoma) family of bone morphogenetic protein (BMP) antagonists. Loss-of-function mutations in this gene are associated with an autosomal-recessive disorder, sclerosteosis, which causes progressive bone overgrowth. A deletion downstream of the sclerostin gene, which causes reduced sclerostin expression, is associated with a milder form of the disorder called van Buchem disease.

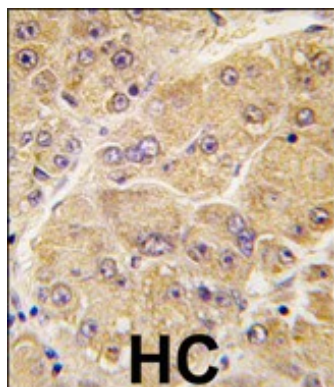
References

- Semenov,M.V., J. Biol. Chem. 281 (50), 38276-38284 (2006)
Ellies,D.L., J. Bone Miner. Res. 21 (11), 1738-1749 (2006)
Balemans,W., J Musculoskelet Neuronal Interact 6 (4), 355-356 (2006)
Gardner,J.C., J. Clin. Endocrinol. Metab. 90 (12), 6392-6395 (2005)

Images



Western blot analysis of lysates from human kidney and liver tissue lysates (from left to right),using SOST Antibody (Center)(Cat. #AP6261c). AP6261c was diluted at 1:1000 at each lane. A goat anti-rabbit IgG H&L(HRP) at 1:5000 dilution was used as the secondary antibody.Lysates at 35ug per lane.



Formalin-fixed and paraffin-embedded human hepatocarcinoma tissue reacted with SOST antibody (Center)(Cat.#AP6261c), which was peroxidase-conjugated to the secondary antibody, followed by DAB staining. This data demonstrates the use of this antibody for immunohistochemistry; clinical relevance has not been evaluated.

Please note: All products are 'FOR RESEARCH USE ONLY. NOT FOR USE IN DIAGNOSTIC OR THERAPEUTIC PROCEDURES'.