

# MMP3 Antibody (Center)

Purified Rabbit Polyclonal Antibody (Pab)  
Catalog # AP6211A

## Product Information

---

<b>Application</b>	IHC-P, FC, WB, E
<b>Primary Accession</b>	<a href="#">P08254</a>
<b>Other Accession</b>	<a href="#">NP_002413</a>
<b>Reactivity</b>	Human
<b>Host</b>	Rabbit
<b>Clonality</b>	Polyclonal
<b>Isotype</b>	Rabbit IgG
<b>Clone Names</b>	RB02015-02016
<b>Antigen Region</b>	298-327

## Additional Information

---

<b>Other Names</b>	Stromelysin-1, SL-1, Matrix metalloproteinase-3, MMP-3, Transin-1, MMP3, STMY1
<b>Target/Specificity</b>	This MMP3 antibody is generated from rabbits immunized with a KLH conjugated synthetic peptide between 298-327 amino acids from the Central region of human MMP3.
<b>Dilution</b>	IHC-P~~1:100~500 FC~~1:10~50 WB~~1:1000 E~~Use at an assay dependent concentration.
<b>Format</b>	Purified polyclonal antibody supplied in PBS with 0.09% (W/V) sodium azide. This antibody is prepared by Saturated Ammonium Sulfate (SAS) precipitation followed by dialysis against PBS.
<b>Storage</b>	Maintain refrigerated at 2-8°C for up to 2 weeks. For long term storage store at -20°C in small aliquots to prevent freeze-thaw cycles.
<b>Precautions</b>	MMP3 Antibody (Center) is for research use only and not for use in diagnostic or therapeutic procedures.

## Protein Information

---

### Background

---

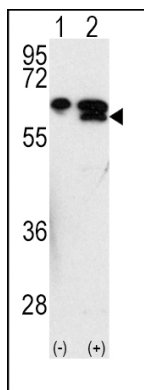
Proteins of the matrix metalloproteinase (MMP) family are involved in the breakdown of extracellular matrix in normal physiological processes, such as embryonic development, reproduction, and tissue remodeling, as well as in disease processes, such as arthritis and metastasis. Most MMPs are secreted as inactive proproteins which are activated when cleaved by extracellular proteinases. MMP3 is an enzyme which

degrades fibronectin, laminin, collagens III, IV, IX, and X, and cartilage proteoglycans. The enzyme is thought to be involved in wound repair, progression of atherosclerosis, and tumor initiation.

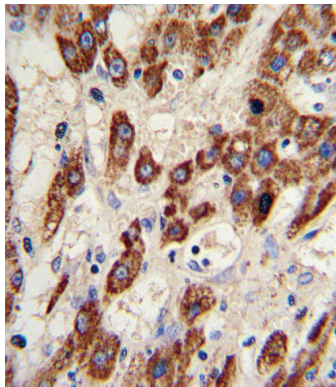
## References

- Sage, E.H., et al., J. Biol. Chem. 278(39):37849-37857 (2003).  
Matsuyama, A., et al., Circulation 108(12):1469-1473 (2003).  
Mercapide, J., et al., Int. J. Cancer 106(5):676-682 (2003).  
Bodemer, C., et al., J. Invest. Dermatol. 121(2):273-279 (2003).  
Kang, M.K., et al., Exp. Cell Res. 287(2):272-281 (2003).

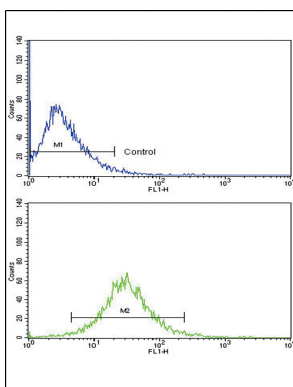
## Images



Western blot analysis of MMP3 (arrow) using rabbit polyclonal MMP3 Antibody (Center) (Cat.#AP6211a). 293 cell lysates (2 ug/lane) either nontransfected (Lane 1) or transiently transfected with the MMP3 gene (Lane 2) (Origene Technologies).



Formalin-fixed and paraffin-embedded human hepatocarcinoma reacted with MMP3 Antibody (Center), which was peroxidase-conjugated to the secondary antibody, followed by DAB staining. This data demonstrates the use of this antibody for immunohistochemistry; clinical relevance has not been evaluated.



Flow cytometric analysis of HepG2 cells using MMP3 Antibody (Center)(bottom histogram) compared to a negative control cell (top histogram). FITC-conjugated goat-anti-rabbit secondary antibodies were used for the analysis.

Please note: All products are 'FOR RESEARCH USE ONLY. NOT FOR USE IN DIAGNOSTIC OR THERAPEUTIC PROCEDURES'.