

Anti-Beta2A-tubulin Antibody

Mouse monoclonal antibody to Beta2A-tubulin

Catalog # AP61569

Product Information

Application	WB, IP
Primary Accession	Q13885
Other Accession	Q7TMM9
Reactivity	Human, Mouse, Rat
Host	Mouse
Clonality	Monoclonal
Calculated MW	49907

Additional Information

Gene ID	7280
Other Names	TUBB2; Tubulin beta-2A chain; Tubulin beta class IIa
Target/Specificity	KLH-conjugated synthetic peptide encompassing a sequence of human Beta2A-tubulin. The exact sequence is proprietary.
Dilution	WB~~WB (1/50000 - 1/100000), IP (1/100 - 1/200) IP~~WB (1/50000 - 1/100000), IP (1/100 - 1/200)
Format	Liquid in 0.42% Potassium phosphate, 0.87% Sodium chloride, pH 7.3, 30% glycerol, and 0.09% (W/V) sodium azide.
Storage	Store at -20 °C.Stable for 12 months from date of receipt

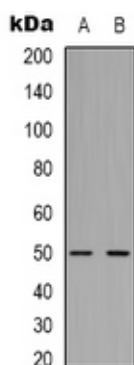
Protein Information

Name	TUBB2A
Synonyms	TUBB2
Function	Tubulin is the major constituent of microtubules, a cylinder consisting of laterally associated linear protofilaments composed of alpha- and beta-tubulin heterodimers. Microtubules grow by the addition of GTP-tubulin dimers to the microtubule end, where a stabilizing cap forms. Below the cap, tubulin dimers are in GDP-bound state, owing to GTPase activity of alpha-tubulin.
Cellular Location	Cytoplasm, cytoskeleton.
Tissue Location	High expression in brain, where it represents 30% of all beta-tubulins.

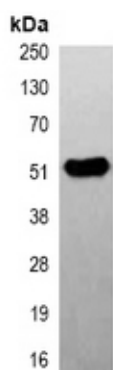
Background

KLH-conjugated synthetic peptide encompassing a sequence of human Beta2A-tubulin. The exact sequence is proprietary.

Images



Western blot analysis of Beta2A-tubulin expression in mouse brain (A), rat brain (B) whole cell lysates.



Immunoprecipitation of Beta2A-tubulin from 0.5mg mouse brain whole cell extract lysate, using Anti-Beta2A-tubulin Antibody.

Please note: All products are 'FOR RESEARCH USE ONLY. NOT FOR USE IN DIAGNOSTIC OR THERAPEUTIC PROCEDURES'.