

Anti-Alpha-crystallin C Antibody

Mouse monoclonal antibody to Alpha-crystallin C

Catalog # AP61566

Product Information

Application	WB
Primary Accession	Q9UJY1
Reactivity	Human, Mouse, Rat
Host	Mouse
Clonality	Monoclonal
Calculated MW	21604

Additional Information

Gene ID	26353
Other Names	CRYAC; E2IG1; HSP22; Heat shock protein beta-8; HspB8; Alpha-crystallin C chain; E2-induced gene 1 protein; Protein kinase H11; Small stress protein-like protein HSP22
Target/Specificity	Recombinant protein corresponding to human Alpha-crystallin C.
Dilution	WB~~WB (1/1000 - 1/2000)
Format	Liquid in 0.42% Potassium phosphate, 0.87% Sodium chloride, pH 7.3, 30% glycerol, and 0.09% (W/V) sodium azide.
Storage	Store at -20 °C.Stable for 12 months from date of receipt

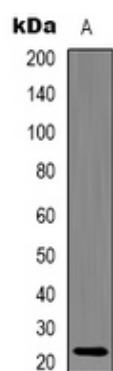
Protein Information

Name	HSPB8
Synonyms	CRYAC, E2IG1, HSP22
Function	Involved in the chaperone-assisted selective autophagy (CASA), a crucial process for protein quality control, particularly in mechanical strained cells and tissues such as muscle. Displays temperature-dependent chaperone activity.
Cellular Location	Cytoplasm. Nucleus Note=Translocates to nuclear foci during heat shock
Tissue Location	Predominantly expressed in skeletal muscle and heart.

Background

Recombinant protein corresponding to human Alpha-crystallin C.

Images



Western blot analysis of Alpha-crystallin C expression in 293T (A) whole cell lysates.

Please note: All products are 'FOR RESEARCH USE ONLY. NOT FOR USE IN DIAGNOSTIC OR THERAPEUTIC PROCEDURES'.