

# Anti-CD93 Antibody

Rabbit polyclonal antibody to CD93  
Catalog # AP61542

## Product Information

---

<b>Application</b>	WB
<b>Primary Accession</b>	<a href="#">Q9NPY3</a>
<b>Reactivity</b>	Human
<b>Host</b>	Rabbit
<b>Clonality</b>	Polyclonal

## Additional Information

---

<b>Other Names</b>	C1QR1; MXRA4; Complement component C1q receptor; C1q/MBL/SPA receptor; C1qR; C1qR(p); C1qRp; CDw93; Complement component 1 q subcomponent receptor 1; Matrix-remodeling-associated protein 4; CD93
<b>Target/Specificity</b>	KLH-conjugated synthetic peptide encompassing a sequence within the center region of human CD93. The exact sequence is proprietary.
<b>Dilution</b>	WB--WB (1/500 - 1/2000)
<b>Format</b>	Liquid in 0.42% Potassium phosphate, 0.87% Sodium chloride, pH 7.3, 30% glycerol, and 0.09% (W/V) sodium azide.
<b>Storage</b>	Store at -20 °C. Stable for 12 months from date of receipt

## Protein Information

---

### Background

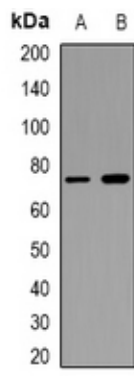
---

KLH-conjugated synthetic peptide encompassing a sequence within the center region of human CD93. The exact sequence is proprietary.

### Images

---

Western blot analysis of CD93 expression in KB (A), THP1 (B) whole cell lysates.



Please note: All products are 'FOR RESEARCH USE ONLY. NOT FOR USE IN DIAGNOSTIC OR THERAPEUTIC PROCEDURES'.