

Anti-FOG2 Antibody

Rabbit polyclonal antibody to FOG2

Catalog # AP61530

Product Information

Application	WB, IHC
Primary Accession	Q8WW38
Reactivity	Human
Host	Rabbit
Clonality	Polyclonal
Calculated MW	128159

Additional Information

Gene ID	23414
Other Names	FOG2; ZNF89B; Zinc finger protein ZFPM2; Friend of GATA protein 2; FOG-2; Friend of GATA 2; hFOG-2; Zinc finger protein 89B; Zinc finger protein multitype 2
Target/Specificity	KLH-conjugated synthetic peptide encompassing a sequence within the center region of human FOG2. The exact sequence is proprietary.
Dilution	WB~~WB (1/500 - 1/1000), IHC (1/100 - 1/200) IHC~~WB (1/500 - 1/1000), IHC (1/100 - 1/200)
Format	Liquid in 0.42% Potassium phosphate, 0.87% Sodium chloride, pH 7.3, 30% glycerol, and 0.09% (W/V) sodium azide.
Storage	Store at -20 °C.Stable for 12 months from date of receipt

Protein Information

Name	ZFPM2
Synonyms	FOG2, ZNF89B
Function	Transcription regulator that plays a central role in heart morphogenesis and development of coronary vessels from epicardium, by regulating genes that are essential during cardiogenesis. Essential cofactor that acts via the formation of a heterodimer with transcription factors of the GATA family GATA4, GATA5 and GATA6. Such heterodimer can both activate or repress transcriptional activity, depending on the cell and promoter context. Also required in gonadal differentiation, possibly be regulating expression of SRY. Probably acts a corepressor of NR2F2 (By similarity).
Cellular Location	Nucleus.

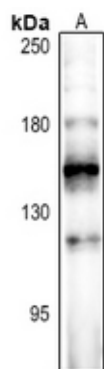
Tissue Location

Widely expressed at low level.

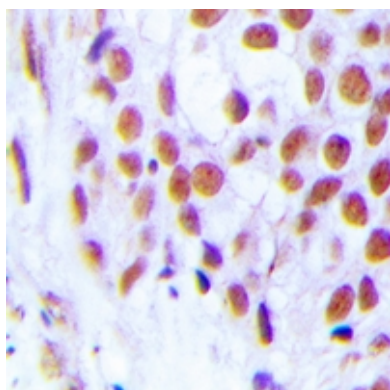
Background

KLH-conjugated synthetic peptide encompassing a sequence within the center region of human FOG2. The exact sequence is proprietary.

Images



Western blot analysis of FOG2 expression in Beas2B (A) whole cell lysates.



Immunohistochemical analysis of FOG2 staining in human breast cancer formalin fixed paraffin embedded tissue section. The section was pre-treated using heat mediated antigen retrieval with sodium citrate buffer (pH 6.0). The section was then incubated with the antibody at room temperature and detected using an HRP conjugated compact polymer system. DAB was used as the chromogen. The section was then counterstained with haematoxylin and mounted with DPX.

Please note: All products are 'FOR RESEARCH USE ONLY. NOT FOR USE IN DIAGNOSTIC OR THERAPEUTIC PROCEDURES'.