

Anti-CD112 Antibody

Rabbit polyclonal antibody to CD112

Catalog # AP61527

Product Information

Application	WB
Primary Accession	Q92692
Other Accession	P32507
Reactivity	Human, Mouse, Rat
Host	Rabbit
Clonality	Polyclonal
Calculated MW	57742

Additional Information

Gene ID	5819
Other Names	HVEB; PRR2; Poliovirus receptor-related protein 2; Herpes virus entry mediator B; Herpesvirus entry mediator B; HveB; Nectin-2; CD112
Target/Specificity	KLH-conjugated synthetic peptide encompassing a sequence within the center region of human CD112. The exact sequence is proprietary.
Dilution	WB~~WB (1/500 - 1/1000)
Format	Liquid in 0.42% Potassium phosphate, 0.87% Sodium chloride, pH 7.3, 30% glycerol, and 0.09% (W/V) sodium azide.
Storage	Store at -20 °C.Stable for 12 months from date of receipt

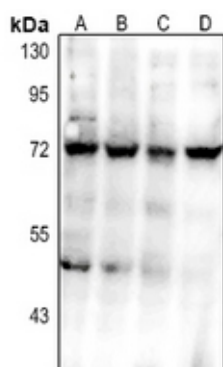
Protein Information

Name	NECTIN2 (HGNC:9707)
Synonyms	HVEB, PRR2, PVRL2
Function	Modulator of T-cell signaling. Can be either a costimulator of T-cell function, or a coinhibitor, depending on the receptor it binds to. Upon binding to CD226, stimulates T-cell proliferation and cytokine production, including that of IL2, IL5, IL10, IL13, and IFNG. Upon interaction with PVRL2, inhibits T-cell proliferation. These interactions are competitive (PubMed: 26755705). Probable cell adhesion protein (PubMed: 9657005).
Cellular Location	Cell membrane; Single-pass type I membrane protein
Tissue Location	Ubiquitous.

Background

KLH-conjugated synthetic peptide encompassing a sequence within the center region of human CD112. The exact sequence is proprietary.

Images



Western blot analysis of CD112 expression in AML12 (A), H9C2 (B), A549 (C), Panc1 (D) whole cell lysates.

Please note: All products are 'FOR RESEARCH USE ONLY. NOT FOR USE IN DIAGNOSTIC OR THERAPEUTIC PROCEDURES'.