

Anti-CD127 Antibody

Rabbit polyclonal antibody to CD127

Catalog # AP61522

Product Information

Application	WB
Primary Accession	P16871
Other Accession	P16872
Reactivity	Human, Mouse, Rat, Monkey
Host	Rabbit
Clonality	Polyclonal
Calculated MW	51579

Additional Information

Gene ID	3575
Other Names	Interleukin-7 receptor subunit alpha; IL-7 receptor subunit alpha; IL-7R subunit alpha; IL-7R-alpha; IL-7RA; CDw127; CD127
Target/Specificity	KLH-conjugated synthetic peptide encompassing a sequence within the C-term region of human CD127. The exact sequence is proprietary.
Dilution	WB~~WB (1/500 - 1/1000)
Format	Liquid in 0.42% Potassium phosphate, 0.87% Sodium chloride, pH 7.3, 30% glycerol, and 0.09% (W/V) sodium azide.
Storage	Store at -20 °C.Stable for 12 months from date of receipt

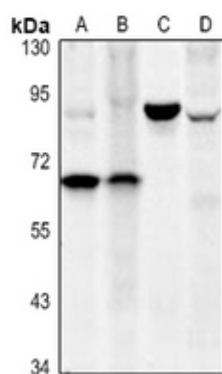
Protein Information

Name	IL7R
Function	Receptor for interleukin-7. Also acts as a receptor for thymic stromal lymphopoietin (TSLP).
Cellular Location	[Isoform 1]: Cell membrane; Single-pass type I membrane protein [Isoform 4]: Secreted.

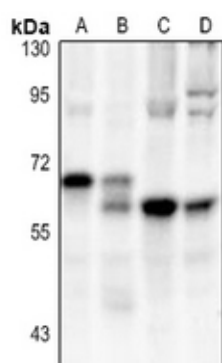
Background

KLH-conjugated synthetic peptide encompassing a sequence within the C-term region of human CD127. The exact sequence is proprietary.

Images



Western blot analysis of CD127 expression in SKOV3 (A), HEK293T (B), rat kidney (C), mouse testis (D) whole cell lysates.



Western blot analysis of CD127 expression in A549 (A), SGC7901 (B), C6 (C), CT26 (D) whole cell lysates.

Please note: All products are 'FOR RESEARCH USE ONLY. NOT FOR USE IN DIAGNOSTIC OR THERAPEUTIC PROCEDURES'.