

Anti-CD339 Antibody

Rabbit polyclonal antibody to CD339

Catalog # AP61484

Product Information

Application	WB
Primary Accession	P78504
Other Accession	Q9QXX0
Reactivity	Human, Mouse, Rat
Host	Rabbit
Clonality	Polyclonal
Calculated MW	133799

Additional Information

Gene ID	182
Other Names	JAGL1; Protein jagged-1; Jagged1; hj1; CD339
Target/Specificity	KLH-conjugated synthetic peptide encompassing a sequence within the center region of human CD339. The exact sequence is proprietary.
Dilution	WB~~WB (1/500 - 1/1000)
Format	Liquid in 0.42% Potassium phosphate, 0.87% Sodium chloride, pH 7.3, 30% glycerol, and 0.09% (W/V) sodium azide.
Storage	Store at -20 °C.Stable for 12 months from date of receipt

Protein Information

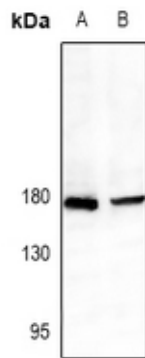
Name	JAG1
Synonyms	JAGL1
Function	Ligand for multiple Notch receptors and involved in the mediation of Notch signaling (PubMed: 18660822 , PubMed: 20437614). May be involved in cell-fate decisions during hematopoiesis (PubMed: 9462510). Seems to be involved in early and late stages of mammalian cardiovascular development. Inhibits myoblast differentiation (By similarity). Enhances fibroblast growth factor-induced angiogenesis (in vitro).
Cellular Location	Membrane; Single-pass type I membrane protein. Cell membrane
Tissue Location	Widely expressed in adult and fetal tissues. In cervix epithelium expressed in undifferentiated subcolumnar reserve cells and squamous metaplasia. Expression is up-regulated in cervical squamous cell carcinoma. Expressed in

bone marrow cell line HS-27a which supports the long-term maintenance of immature progenitor cells

Background

KLH-conjugated synthetic peptide encompassing a sequence within the center region of human CD339. The exact sequence is proprietary.

Images



Western blot analysis of CD339 expression in C6 (A), CT26 (B) whole cell lysates.

Please note: All products are 'FOR RESEARCH USE ONLY. NOT FOR USE IN DIAGNOSTIC OR THERAPEUTIC PROCEDURES'.