

Anti-Orexin Receptor 1 Antibody

Rabbit polyclonal antibody to Orexin Receptor 1

Catalog # AP61479

Product Information

Application	WB, IF
Primary Accession	O43613
Other Accession	P58307
Reactivity	Human, Mouse, Rat
Host	Rabbit
Clonality	Polyclonal
Calculated MW	47536

Additional Information

Gene ID	3061
Other Names	Orexin receptor type 1; Ox-1-R; Ox1-R; Ox1R; Hypocretin receptor type 1
Target/Specificity	KLH-conjugated synthetic peptide encompassing a sequence within the center region of human Orexin Receptor 1. The exact sequence is proprietary.
Dilution	WB~~WB (1/500 - 1/1000), IF/IC (1/50 - 1/200) IF~~WB (1/500 - 1/1000), IF/IC (1/50 - 1/200)
Format	Liquid in 0.42% Potassium phosphate, 0.87% Sodium chloride, pH 7.3, 30% glycerol, and 0.09% (W/V) sodium azide.
Storage	Store at -20 °C.Stable for 12 months from date of receipt

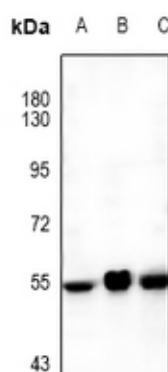
Protein Information

Name	HCRT1 (HGNC:4848)
Function	G-protein coupled receptor that binds the neuropeptide orexin-A with high affinity, and orexin-B with lower affinity, two peptides derived from a common precursor, prepro-orexin (PubMed: 32669442 , PubMed: 9491897). Its activity is mediated via a G(q)- protein-coupled pathway, which activates the phosphatidylinositol- calcium second messenger system in response to orexin-A binding (PubMed: 32669442). In addition to G(q)-mediated signaling, orexin-A stimulation also promotes beta-arrestin recruitment, leading to receptor internalization (PubMed: 15683363 , PubMed: 32669442). Plays a significant role in the regulation of food intake (By similarity).
Cellular Location	Cell membrane; Multi-pass membrane protein

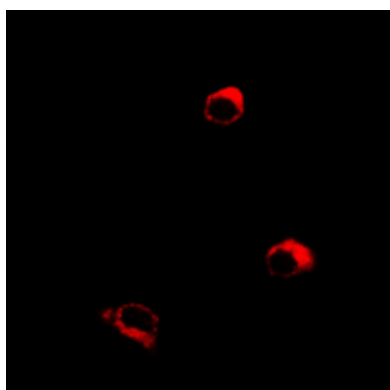
Background

KLH-conjugated synthetic peptide encompassing a sequence within the center region of human Orexin Receptor 1. The exact sequence is proprietary.

Images



Western blot analysis of Orexin Receptor 1 expression in U87MG (A), rat brain (B), mouse brain (C) whole cell lysates.



Immunofluorescent analysis of Orexin Receptor 1 staining in MCF7 cells. Formalin-fixed cells were permeabilized with 0.1% Triton X-100 in TBS for 5-10 minutes and blocked with 3% BSA-PBS for 30 minutes at room temperature. Cells were probed with the primary antibody in 3% BSA-PBS and incubated overnight at 4 °C in a humidified chamber. Cells were washed with PBST and incubated with a Alexa Fluor 594-conjugated secondary antibody (red) in PBS at room temperature in the dark.

Please note: All products are 'FOR RESEARCH USE ONLY. NOT FOR USE IN DIAGNOSTIC OR THERAPEUTIC PROCEDURES'.