

Anti-GPR62 Antibody

Rabbit polyclonal antibody to GPR62

Catalog # AP61478

Product Information

Application	WB
Primary Accession	Q9BZJ7
Other Accession	Q80UC6
Reactivity	Human, Mouse, Rat
Host	Rabbit
Clonality	Polyclonal
Calculated MW	37614

Additional Information

Gene ID	118442
Other Names	Probable G-protein coupled receptor 62; G-protein coupled receptor GPCR8; hGPCR8; G-protein coupled receptor KPG_005
Target/Specificity	KLH-conjugated synthetic peptide encompassing a sequence within the center region of human GPR62. The exact sequence is proprietary.
Dilution	WB~~WB (1/500 - 1/1000)
Format	Liquid in 0.42% Potassium phosphate, 0.87% Sodium chloride, pH 7.3, 30% glycerol, and 0.09% (W/V) sodium azide.
Storage	Store at -20 °C.Stable for 12 months from date of receipt

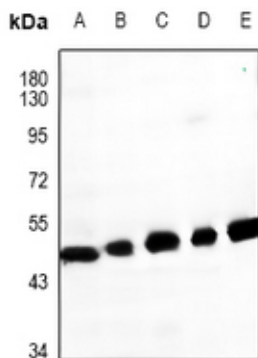
Protein Information

Name	GPR62
Function	Orphan G-protein coupled receptor. Constitutively activates the G(q/11)/inositol phosphate and the G(s)-alpha/cAMP signaling pathways (PubMed: 28827538). Has spontaneous activity for beta-arrestin recruitment (PubMed: 28827538). Shows a reciprocal modulation of signaling functions with the melatonin receptor MTNR1B most likely through receptor heteromerization (PubMed: 28827538).
Cellular Location	Cell membrane; Multi-pass membrane protein. Endosome membrane; Multi-pass membrane protein. Note=Colocalizes with ARRB2 in the endosome (PubMed: 28827538).
Tissue Location	Expressed in brain; detected in the basal forebrain, frontal cortex, caudate, putamen, thalamus and hippocampus

Background

KLH-conjugated synthetic peptide encompassing a sequence within the center region of human GPR62. The exact sequence is proprietary.

Images



Western blot analysis of GPR62 expression in mouse brain (A), rat brain (B), Hela (C), SGC7901 (D), PC3 (E) whole cell lysates.

Please note: All products are 'FOR RESEARCH USE ONLY. NOT FOR USE IN DIAGNOSTIC OR THERAPEUTIC PROCEDURES'.