

Anti-Complement C1S LC Antibody

Rabbit polyclonal antibody to Complement C1S LC

Catalog # AP61476

Product Information

Application	WB
Primary Accession	P09871
Reactivity	Human, Rat
Host	Rabbit
Clonality	Polyclonal
Calculated MW	76684

Additional Information

Gene ID	716
Other Names	Complement C1s subcomponent; C1 esterase; Complement component 1 subcomponent s
Target/Specificity	Recognizes endogenous levels of Complement C1S LC protein.
Dilution	WB~~WB (1/500 - 1/1000)
Format	Liquid in 0.42% Potassium phosphate, 0.87% Sodium chloride, pH 7.3, 30% glycerol, and 0.09% (W/V) sodium azide.
Storage	Store at -20 °C.Stable for 12 months from date of receipt

Protein Information

Name	C1S {ECO:0000303 PubMed:3500856, ECO:0000312 HGNC:HGNC:1247}
Function	<p>Component of the complement C1 complex, a multiprotein complex that initiates the classical pathway of the complement system, a cascade of proteins that leads to phagocytosis and breakdown of pathogens and signaling that strengthens the adaptive immune system (PubMed:11445589, PubMed:16169853, PubMed:417728, PubMed:467643, PubMed:6271784, PubMed:6282646, PubMed:6319179, PubMed:70787, PubMed:9422791). C1S is activated following association of the C1 complex with immunoglobulins (IgG or IgM) complexed with antigens to form antigen-antibody complexes on the surface of pathogens (PubMed:34155115). C1S is cleaved and activated by C1R to generate C1s subcomponent heavy and light chains (PubMed:11445589, PubMed:6271784). C1s subcomponent light chain then cleaves and activates C2 and C4, the next components of the classical complement pathway (PubMed:16169853, PubMed:467643, PubMed:6282646, PubMed:6319179, PubMed:6906228, PubMed:70787, PubMed:9422791).</p>

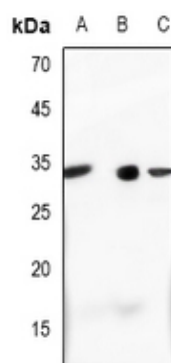
Cellular Location

Secreted. Cell surface. Note=Recruited to the surface of pathogens by the C1Q subcomplex.

Background

KLH-conjugated synthetic peptide encompassing a sequence within the center region of human Complement C1S LC. The exact sequence is proprietary.

Images



Western blot analysis of Complement C1S LC expression in H1688 (A), A549 (B), rat liver (C) whole cell lysates.

Please note: All products are 'FOR RESEARCH USE ONLY. NOT FOR USE IN DIAGNOSTIC OR THERAPEUTIC PROCEDURES'.