

Anti-Von Willebrand Factor Antibody

Rabbit polyclonal antibody to Von Willebrand Factor

Catalog # AP61440

Product Information

Application	WB
Primary Accession	P04275
Other Accession	Q8CIZ8
Reactivity	Human, Mouse, Rat
Host	Rabbit
Clonality	Polyclonal
Calculated MW	309265

Additional Information

Gene ID	7450
Other Names	F8VWF; von Willebrand factor; vWF
Target/Specificity	KLH-conjugated synthetic peptide encompassing a sequence within the C-term region of human Von Willebrand Factor. The exact sequence is proprietary.
Dilution	WB~~WB (1/500 - 1/1000)
Format	Liquid in 0.42% Potassium phosphate, 0.87% Sodium chloride, pH 7.3, 30% glycerol, and 0.09% (W/V) sodium azide.
Storage	Store at -20 °C.Stable for 12 months from date of receipt

Protein Information

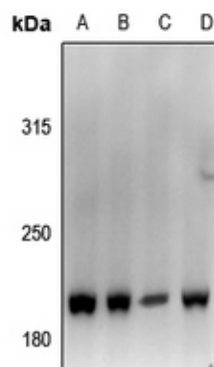
Name	VWF
Synonyms	F8VWF
Function	Important in the maintenance of hemostasis, it promotes adhesion of platelets to the sites of vascular injury by forming a molecular bridge between sub-endothelial collagen matrix and platelet- surface receptor complex GPIb-IX-V. Also acts as a chaperone for coagulation factor VIII, delivering it to the site of injury, stabilizing its heterodimeric structure and protecting it from premature clearance from plasma.
Cellular Location	Secreted. Secreted, extracellular space, extracellular matrix. Note=Localized to storage granules Plasma.

Tissue Location

Background

KLH-conjugated synthetic peptide encompassing a sequence within the C-term region of human Von Willebrand Factor. The exact sequence is proprietary.

Images



Western blot analysis of Von Willebrand Factor expression in mouse brain (A), rat brain (B), LOVO (C), HCT116 (D) whole cell lysates.

Please note: All products are 'FOR RESEARCH USE ONLY. NOT FOR USE IN DIAGNOSTIC OR THERAPEUTIC PROCEDURES'.