

# Anti-Thrombospondin 4 Antibody

Rabbit polyclonal antibody to Thrombospondin 4

Catalog # AP61411

## Product Information

---

<b>Application</b>	WB, IHC
<b>Primary Accession</b>	<a href="#">P35443</a>
<b>Other Accession</b>	<a href="#">Q9Z1T2</a>
<b>Reactivity</b>	Human, Mouse, Rat
<b>Host</b>	Rabbit
<b>Clonality</b>	Polyclonal
<b>Calculated MW</b>	105869

## Additional Information

---

<b>Gene ID</b>	7060
<b>Other Names</b>	TSP4; Thrombospondin-4
<b>Target/Specificity</b>	KLH-conjugated synthetic peptide encompassing a sequence within the center region of human Thrombospondin 4. The exact sequence is proprietary.
<b>Dilution</b>	WB~~WB (1/500 - 1/1000), IH (1/50 - 1/200) IHC~~1:100~500
<b>Format</b>	Liquid in 0.42% Potassium phosphate, 0.87% Sodium chloride, pH 7.3, 30% glycerol, and 0.09% (W/V) sodium azide.
<b>Storage</b>	Store at -20 °C.Stable for 12 months from date of receipt

## Protein Information

---

<b>Name</b>	THBS4
<b>Synonyms</b>	TSP4
<b>Function</b>	Adhesive glycoprotein that mediates cell-to-cell and cell-to- matrix interactions and is involved in various processes including cellular proliferation, migration, adhesion and attachment, inflammatory response to CNS injury, regulation of vascular inflammation and adaptive responses of the heart to pressure overload and in myocardial function and remodeling. Binds to structural extracellular matrix (ECM) proteins and modulates the ECM in response to tissue damage, contributing to cardioprotective and adaptive ECM remodeling. Plays a role in ER stress response, via its interaction with the activating transcription factor 6 alpha (ATF6) which produces adaptive ER stress response factors and protects myocardium from pressure overload. May contribute to spinal presynaptic hypersensitivity and neuropathic pain states after peripheral nerve injury. May play a role in regulating protective

astrogenesis from the subventricular zone (SVZ) niche after injury in a NOTCH1-dependent manner (By similarity).

### Cellular Location

Endoplasmic reticulum {ECO:0000250|UniProtKB:Q9Z1T2}. Sarcoplasmic reticulum {ECO:0000250|UniProtKB:Q9Z1T2}. Secreted {ECO:0000250|UniProtKB:Q9Z1T2}. Secreted, extracellular space {ECO:0000250|UniProtKB:Q9Z1T2}. Secreted, extracellular space, extracellular matrix {ECO:0000250|UniProtKB:Q9Z1T2}

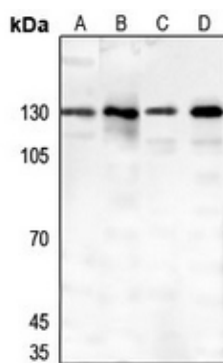
## Background

---

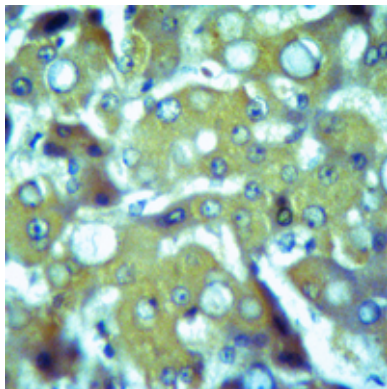
KLH-conjugated synthetic peptide encompassing a sequence within the center region of human Thrombospondin 4. The exact sequence is proprietary.

## Images

---



Western blot analysis of Thrombospondin 4 expression in HEK293T (A), H446 (B), mouse testis (C), rat lung (D) whole cell lysates.



Immunohistochemical analysis of Thrombospondin 4 staining in human liver cancer formalin fixed paraffin embedded tissue section. The section was pre-treated using heat mediated antigen retrieval with sodium citrate buffer (pH 6.0). The section was then incubated with the antibody at room temperature and detected using an HRP conjugated compact polymer system. DAB was used as the chromogen. The section was then counterstained with haematoxylin and mounted with DPX.

Please note: All products are 'FOR RESEARCH USE ONLY. NOT FOR USE IN DIAGNOSTIC OR THERAPEUTIC PROCEDURES'.