

Anti-Caspase 8 p18 Antibody

Rabbit polyclonal antibody to Caspase 8 p18

Catalog # AP61404

Product Information

Application	WB
Primary Accession	Q14790
Reactivity	Human
Host	Rabbit
Clonality	Polyclonal
Calculated MW	55391

Additional Information

Gene ID	841
Other Names	MCH5; Caspase-8; CASP-8; Apoptotic cysteine protease; Apoptotic protease Mch-5; CAP4; FADD-homologous ICE/ced-3-like protease; FADD-like ICE; FLICE; ICE-like apoptotic protease 5; MORT1-associated ced-3 homolog; MACH
Target/Specificity	KLH-conjugated synthetic peptide encompassing a sequence within the center region of human Caspase 8 p18. The exact sequence is proprietary.
Dilution	WB~~WB (1/500 - 1/1000)
Format	Liquid in 0.42% Potassium phosphate, 0.87% Sodium chloride, pH 7.3, 30% glycerol, and 0.09% (W/V) sodium azide.
Storage	Store at -20 °C.Stable for 12 months from date of receipt

Protein Information

Name	CASP8 {ECO:0000303 PubMed:9931493, ECO:0000312 HGNC:HGNC:1509}
Function	Thiol protease that plays a key role in programmed cell death by acting as a molecular switch for apoptosis, necroptosis and pyroptosis, and is required to prevent tissue damage during embryonic development and adulthood (PubMed: 23516580 , PubMed: 35338844 , PubMed: 35446120 , PubMed: 8681376 , PubMed: 8681377 , PubMed: 8962078 , PubMed: 9006941 , PubMed: 9184224). Initiator protease that induces extrinsic apoptosis by mediating cleavage and activation of effector caspases responsible for FAS/CD95-mediated and TNFRSF1A-induced cell death (PubMed: 23516580 , PubMed: 35338844 , PubMed: 35446120 , PubMed: 8681376 , PubMed: 8681377 , PubMed: 8962078 , PubMed: 9006941 , PubMed: 9184224). Cleaves and activates effector caspases CASP3, CASP4, CASP6, CASP7, CASP9 and CASP10 (PubMed: 16916640 , PubMed: 8962078 , PubMed: 9006941). Binding to the adapter molecule FADD recruits it to either receptor FAS/TNFRSF6 or

TNFRSF1A (PubMed:[8681376](#), PubMed:[8681377](#)). The resulting aggregate called the death-inducing signaling complex (DISC) performs CASP8 proteolytic activation (PubMed:[9184224](#)). The active dimeric enzyme is then liberated from the DISC and free to activate downstream apoptotic proteases (PubMed:[9184224](#)). Proteolytic fragments of the N-terminal propeptide (termed CAP3, CAP5 and CAP6) are likely retained in the DISC (PubMed:[9184224](#)). Also cleaves and activates BID, thereby promoting cytochrome C release from mitochondria (By similarity). In addition to extrinsic apoptosis, also acts as a negative regulator of necroptosis: acts by cleaving RIPK1 at 'Asp-324', which is crucial to inhibit RIPK1 kinase activity, limiting TNF-induced apoptosis, necroptosis and inflammatory response (PubMed:[31827280](#), PubMed:[31827281](#)). Also able to initiate pyroptosis by mediating cleavage and activation of gasdermin-C and -D (GSDMC and GSDMD, respectively): gasdermin cleavage promotes release of the N-terminal moiety that binds to membranes and forms pores, triggering pyroptosis (PubMed:[32929201](#), PubMed:[34012073](#)). Initiates pyroptosis following inactivation of MAP3K7/TAK1 (By similarity). Also acts as a regulator of innate immunity by mediating cleavage and inactivation of N4BP1 downstream of TLR3 or TLR4, thereby promoting cytokine production (By similarity). May participate in the Granzyme B (GZMB) cell death pathways (PubMed:[8755496](#)). Cleaves PARP1 and PARP2 (PubMed:[8681376](#)). Independent of its protease activity, promotes cell migration following phosphorylation at Tyr-380 (PubMed:[18216014](#), PubMed:[27109099](#)).

Cellular Location

Cytoplasm {ECO:0000250|UniProtKB:Q9JHX4}. Nucleus {ECO:0000250|UniProtKB:Q9JHX4}. Cell projection, lamellipodium. Note=Recruitment to lamellipodia of migrating cells is enhanced by phosphorylation at Tyr-380

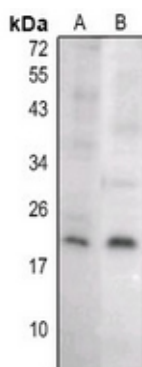
Tissue Location

Isoform 1, isoform 5 and isoform 7 are expressed in a wide variety of tissues. Highest expression in peripheral blood leukocytes, spleen, thymus and liver. Barely detectable in brain, testis and skeletal muscle

Background

KLH-conjugated synthetic peptide encompassing a sequence within the center region of human Caspase 8 p18. The exact sequence is proprietary.

Images



Western blot analysis of Caspase 8 p18 expression in HEK293T (A), LO2 (B) whole cell lysates.

Please note: All products are 'FOR RESEARCH USE ONLY. NOT FOR USE IN DIAGNOSTIC OR THERAPEUTIC PROCEDURES'.