

Anti-ABHD14B Antibody

Rabbit polyclonal antibody to ABHD14B
Catalog # AP61387

Product Information

Application	WB, IHC
Primary Accession	Q96IU4
Other Accession	Q8VCR7
Reactivity	Human, Mouse, Rat, Bovine
Host	Rabbit
Clonality	Polyclonal
Calculated MW	22346

Additional Information

Gene ID	84836
Other Names	CIB; Alpha/beta hydrolase domain-containing protein 14B; Abhydrolase domain-containing protein 14B; CCG1-interacting factor B
Target/Specificity	KLH-conjugated synthetic peptide encompassing a sequence within the C-term region of human ABHD14B. The exact sequence is proprietary.
Dilution	WB~~WB (1/500 - 1/1000), IHC (1/50 - 1/200) IHC~~WB (1/500 - 1/1000), IHC (1/50 - 1/200)
Format	Liquid in 0.42% Potassium phosphate, 0.87% Sodium chloride, pH 7.3, 30% glycerol, and 0.09% (W/V) sodium azide.
Storage	Store at -20 °C. Stable for 12 months from date of receipt

Protein Information

Name	ABHD14B {ECO:0000303 PubMed:31478652, ECO:0000312 HGNC:HGNC:28235}
Function	<p>Acts as an atypical protein-lysine deacetylase in vitro (PubMed: 31478652). Catalyzes the deacetylation of lysine residues using CoA as substrate, generating acetyl-CoA and the free amine of protein- lysine residues (PubMed:31478652). Additional experiments are however required to confirm the protein-lysine deacetylase activity in vivo (Probable). Has hydrolase activity towards various surrogate p- nitrophenyl (pNp) substrates, such as pNp-butyrate, pNp-acetate and pNp-octanoate in vitro, with a strong preference for pNp-acetate (PubMed:14672934, PubMed:31478652). May activate transcription (PubMed:14672934).</p> <p>Cytoplasm. Nucleus. Note=Predominantly cytoplasmic</p>

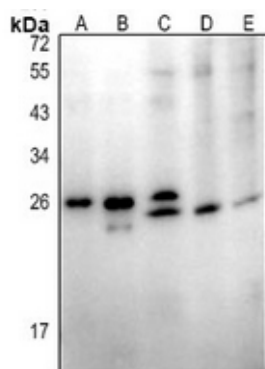
Cellular Location
Tissue Location

Ubiquitous (PubMed:14672934). Detected in spleen, thymus, prostate, testis, ovary, small intestine, colon, peripheral blood leukocyte, heart, placenta, lung, liver, skeletal muscle, pancreas and kidney (PubMed:14672934).

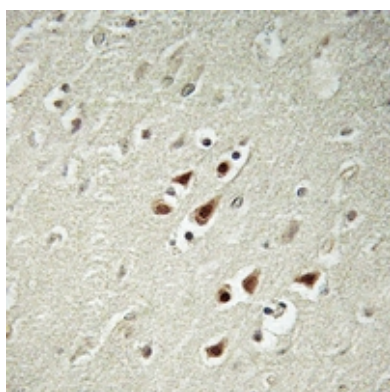
Background

KLH-conjugated synthetic peptide encompassing a sequence within the C-term region of human ABHD14B. The exact sequence is proprietary.

Images



Western blot analysis of ABHD14B expression in mouse spleen (A), rat thymus (B), Jurkat (C), K562 (D), HEK293T (E) whole cell lysates.



Immunohistochemical analysis of ABHD14B staining in human brain formalin fixed paraffin embedded tissue section. The section was pre-treated using heat mediated antigen retrieval with sodium citrate buffer (pH 6.0). The section was then incubated with the antibody at room temperature and detected using an HRP conjugated compact polymer system. DAB was used as the chromogen. The section was then counterstained with haematoxylin and mounted with DPX.

Please note: All products are 'FOR RESEARCH USE ONLY. NOT FOR USE IN DIAGNOSTIC OR THERAPEUTIC PROCEDURES'.