

Anti-CD11c Antibody

Rabbit polyclonal antibody to CD11c
Catalog # AP61371

Product Information

Application	WB, IHC
Primary Accession	P20702
Reactivity	Human
Host	Rabbit
Clonality	Polyclonal
Calculated MW	127829

Additional Information

Gene ID	3687
Other Names	CD11C; Integrin alpha-X; CD11 antigen-like family member C; Leu M5; Leukocyte adhesion glycoprotein p15095 alpha chain; Leukocyte adhesion receptor p15095; CD11c
Target/Specificity	KLH-conjugated synthetic peptide encompassing a sequence within the center region of human CD11c. The exact sequence is proprietary.
Dilution	WB~WB (1/500 - 1/1000), IHC (1/50 - 1/200) IHC~WB (1/500 - 1/1000), IHC (1/50 - 1/200)
Format	Liquid in 0.42% Potassium phosphate, 0.87% Sodium chloride, pH 7.3, 30% glycerol, and 0.09% (W/V) sodium azide.
Storage	Store at -20 °C. Stable for 12 months from date of receipt

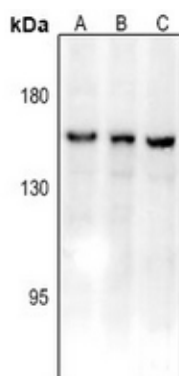
Protein Information

Name	ITGAX (HGNC:6152)
Synonyms	CD11C
Function	Integrin alpha-X/beta-2 is a receptor for fibrinogen. It recognizes the sequence G-P-R in fibrinogen. It mediates cell-cell interaction during inflammatory responses. It is especially important in monocyte adhesion and chemotaxis. Functions as a receptor of the erythrocyte-specific adhesion molecule ICAM4 and mediates erythrophagocytosis (PubMed: 16985175).
Cellular Location	Cell membrane; Single-pass type I membrane protein
Tissue Location	Predominantly expressed in monocytes and granulocytes

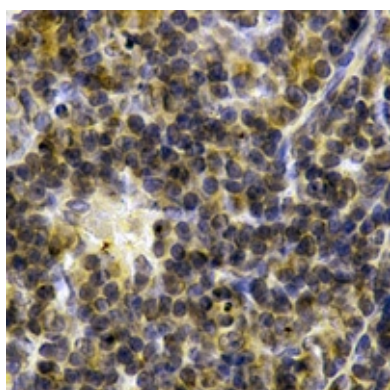
Background

KLH-conjugated synthetic peptide encompassing a sequence within the center region of human CD11c. The exact sequence is proprietary.

Images



Western blot analysis of CD11c expression in U87MG (A), A549 (B), Myla2059 (C) whole cell lysates.



Immunohistochemical analysis of CD11c staining in human spleen formalin fixed paraffin embedded tissue section. The section was pre-treated using heat mediated antigen retrieval with sodium citrate buffer (pH 6.0). The section was then incubated with the antibody at room temperature and detected using an HRP conjugated compact polymer system. DAB was used as the chromogen. The section was then counterstained with haematoxylin and mounted with DPX.

Please note: All products are 'FOR RESEARCH USE ONLY. NOT FOR USE IN DIAGNOSTIC OR THERAPEUTIC PROCEDURES'.