

Anti-CD103 Antibody

Rabbit polyclonal antibody to CD103
Catalog # AP61364

Product Information

Application	WB
Primary Accession	P38570
Reactivity	Human
Host	Rabbit
Clonality	Polyclonal
Calculated MW	130159

Additional Information

Gene ID	3682
Other Names	Integrin alpha-E; HML-1 antigen; Integrin alpha-IEL; Mucosal lymphocyte 1 antigen; CD103
Target/Specificity	KLH-conjugated synthetic peptide encompassing a sequence within the N-term region of human CD103. The exact sequence is proprietary.
Dilution	WB~~WB (1/500 - 1/1000)
Format	Liquid in 0.42% Potassium phosphate, 0.87% Sodium chloride, pH 7.3, 30% glycerol, and 0.09% (W/V) sodium azide.
Storage	Store at -20 °C.Stable for 12 months from date of receipt

Protein Information

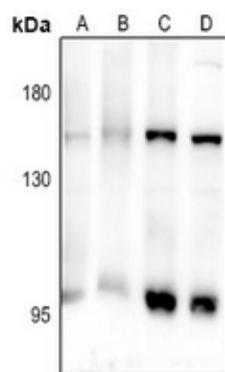
Name	ITGAE
Function	Integrin ITGAE/ITGB7 (alpha-E/beta-7) is a receptor for E- cadherin. It mediates adhesion of intra-epithelial T-lymphocytes to epithelial cell monolayers.
Cellular Location	Membrane; Single-pass type I membrane protein.
Tissue Location	Expressed on a subclass of T-lymphocytes known as intra-epithelial lymphocytes which are located between mucosal epithelial cells

Background

KLH-conjugated synthetic peptide encompassing a sequence within the N-term region of human CD103. The

exact sequence is proprietary.

Images



Western blot analysis of CD103 expression in PMVEC (A), SP20 (B), SGC7901 (C), A549 (D) whole cell lysates.

Please note: All products are 'FOR RESEARCH USE ONLY. NOT FOR USE IN DIAGNOSTIC OR THERAPEUTIC PROCEDURES'.