

Anti-NCOA3 Antibody

Rabbit polyclonal antibody to NCOA3
Catalog # AP61363

Product Information

Application	WB, IHC
Primary Accession	Q9Y6Q9
Other Accession	O09000
Reactivity	Human, Mouse, Monkey
Host	Rabbit
Clonality	Polyclonal
Calculated MW	155293

Additional Information

Gene ID	8202
Other Names	AIB1; BHLHE42; RAC3; TRAM1; Nuclear receptor coactivator 3; NCoA-3; ACTR; Amplified in breast cancer 1 protein; AIB-1; CBP-interacting protein; pCIP; Class E basic helix-loop-helix protein 42; bHLHe42; Receptor-associated coactivator 3; RAC-3; Steroid receptor coactivator protein 3; SRC-3; Thyroid hormone receptor activator molecule 1; TRAM-1
Target/Specificity	KLH-conjugated synthetic peptide encompassing a sequence within the center region of human NCOA3. The exact sequence is proprietary.
Dilution	WB~WB (1/500 - 1/1000), IHC (1/50 - 1/200) IHC~WB (1/500 - 1/1000), IHC (1/50 - 1/200)
Format	Liquid in 0.42% Potassium phosphate, 0.87% Sodium chloride, pH 7.3, 30% glycerol, and 0.09% (W/V) sodium azide.
Storage	Store at -20 °C. Stable for 12 months from date of receipt

Protein Information

Name	NCOA3
Synonyms	AIB1, BHLHE42, RAC3, TRAM1
Function	Nuclear receptor coactivator that directly binds nuclear receptors and stimulates the transcriptional activities in a hormone- dependent fashion. Plays a central role in creating a multisubunit coactivator complex, which probably acts via remodeling of chromatin. Involved in the coactivation of different nuclear receptors, such as for steroids (GR and ER), retinoids (RARs and RXRs), thyroid hormone (TRs), vitamin D3 (VDR) and prostanoids (PPARs). Displays histone acetyltransferase activity. Also involved in the coactivation of

the NF-kappa-B pathway via its interaction with the NFKB1 subunit.

Cellular Location

Cytoplasm. Nucleus. Note=Mainly cytoplasmic and weakly nuclear. Upon TNF activation and subsequent phosphorylation, it translocates from the cytoplasm to the nucleus

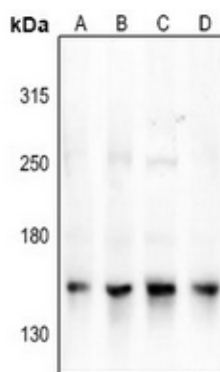
Tissue Location

Widely expressed. High expression in heart, skeletal muscle, pancreas and placenta. Low expression in brain, and very low in lung, liver and kidney

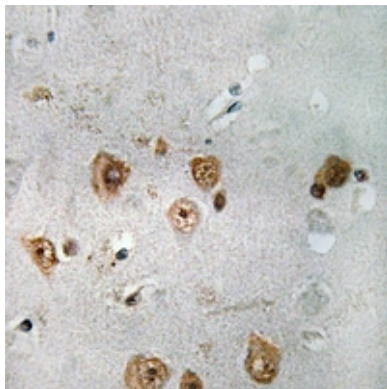
Background

KLH-conjugated synthetic peptide encompassing a sequence within the center region of human NCOA3. The exact sequence is proprietary.

Images



Western blot analysis of NCOA3 expression in AML12 (A), A2780 (B), MCF7 (C), LO2 (D) whole cell lysates.



Immunohistochemical analysis of NCOA3 staining in human brain formalin fixed paraffin embedded tissue section. The section was pre-treated using heat mediated antigen retrieval with sodium citrate buffer (pH 6.0). The section was then incubated with the antibody at room temperature and detected using an HRP conjugated compact polymer system. DAB was used as the chromogen. The section was then counterstained with haematoxylin and mounted with DPX.

Please note: All products are 'FOR RESEARCH USE ONLY. NOT FOR USE IN DIAGNOSTIC OR THERAPEUTIC PROCEDURES'.