

Anti-E2F5 Antibody

Rabbit polyclonal antibody to E2F5

Catalog # AP61360

Product Information

Application	WB
Primary Accession	Q15329
Other Accession	Q61502
Reactivity	Human, Mouse, Rat
Host	Rabbit
Clonality	Polyclonal
Calculated MW	37610

Additional Information

Gene ID	1875
Other Names	Transcription factor E2F5; E2F-5
Target/Specificity	KLH-conjugated synthetic peptide encompassing a sequence within the center region of human E2F5. The exact sequence is proprietary.
Dilution	WB~~WB (1/500 - 1/1000)
Format	Liquid in 0.42% Potassium phosphate, 0.87% Sodium chloride, pH 7.3, 30% glycerol, and 0.09% (W/V) sodium azide.
Storage	Store at -20 °C.Stable for 12 months from date of receipt

Protein Information

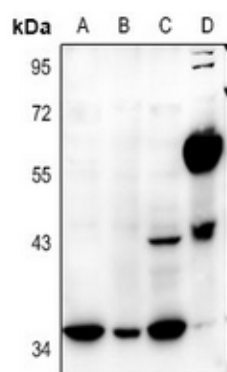
Name	E2F5
Function	Transcriptional activator that binds to E2F sites, these sites are present in the promoter of many genes whose products are involved in cell proliferation. May mediate growth factor-initiated signal transduction. It is likely involved in the early responses of resting cells to growth factor stimulation. Specifically required for multiciliate cell differentiation: together with MCIDAS and E2F5, binds and activate genes required for centriole biogenesis.
Cellular Location	Nucleus.

Background

KLH-conjugated synthetic peptide encompassing a sequence within the center region of human E2F5. The

exact sequence is proprietary.

Images



Western blot analysis of E2F5 expression in Myla2059 (A), HEK293T (B), MCF7 (C), mouse testis (D) whole cell lysates.

Please note: All products are 'FOR RESEARCH USE ONLY. NOT FOR USE IN DIAGNOSTIC OR THERAPEUTIC PROCEDURES'.