

Anti-CHRM4 Antibody

Rabbit polyclonal antibody to CHRM4

Catalog # AP61353

Product Information

Application	WB, IF/IC
Primary Accession	P08173
Other Accession	P32211
Reactivity	Human, Mouse, Rat
Host	Rabbit
Clonality	Polyclonal
Calculated MW	53049

Additional Information

Gene ID	1132
Other Names	Muscarinic acetylcholine receptor M4
Target/Specificity	KLH-conjugated synthetic peptide encompassing a sequence within the center region of human CHRM4. The exact sequence is proprietary.
Dilution	WB~~WB (1/500 - 1/1000), IF/IC (1/100 - 1/500) IF/IC~~N/A
Format	Liquid in 0.42% Potassium phosphate, 0.87% Sodium chloride, pH 7.3, 30% glycerol, and 0.09% (W/V) sodium azide.
Storage	Store at -20 °C.Stable for 12 months from date of receipt

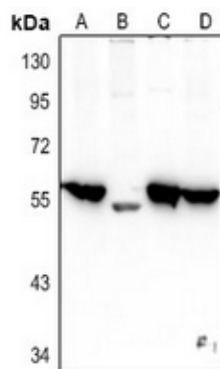
Protein Information

Name	CHRM4
Function	The muscarinic acetylcholine receptor mediates various cellular responses, including inhibition of adenylate cyclase, breakdown of phosphoinositides and modulation of potassium channels through the action of G proteins. Primary transducing effect is inhibition of adenylate cyclase.
Cellular Location	Cell membrane; Multi-pass membrane protein. Postsynaptic cell membrane; Multi-pass membrane protein

Background

KLH-conjugated synthetic peptide encompassing a sequence within the center region of human CHRM4. The exact sequence is proprietary.

Images



Western blot analysis of CHRM4 expression in C6 (A), SGC7901 (B), U87MG (C), A375 (D) whole cell lysates.



Immunofluorescent analysis of CHRM4 staining in LOVO cells. Formalin-fixed cells were permeabilized with 0.1% Triton X-100 in TBS for 5-10 minutes and blocked with 3% BSA-PBS for 30 minutes at room temperature. Cells were probed with the primary antibody in 3% BSA-PBS and incubated overnight at 4 °C in a humidified chamber. Cells were washed with PBST and incubated with a Alexa Fluor 594-conjugated secondary antibody (red) in PBS at room temperature in the dark.

Please note: All products are 'FOR RESEARCH USE ONLY. NOT FOR USE IN DIAGNOSTIC OR THERAPEUTIC PROCEDURES'.