

Anti-ITIH4 Antibody

Rabbit polyclonal antibody to ITIH4

Catalog # AP61349

Product Information

| | |
|-------------------|------------------------|
| Application | WB |
| Primary Accession | Q14624 |
| Reactivity | Human, Rat |
| Host | Rabbit |
| Clonality | Polyclonal |
| Calculated MW | 103357 |

Additional Information

| | |
|--------------------|--|
| Gene ID | 3700 |
| Other Names | IHRP; ITIHL1; PK120; Inter-alpha-trypsin inhibitor heavy chain H4; ITI heavy chain H4; ITI-HC4; Inter-alpha-inhibitor heavy chain 4; Inter-alpha-trypsin inhibitor family heavy chain-related protein; IHRP; Plasma kallikrein sensitive glycoprotein 120; Gp120; PK-120 |
| Target/Specificity | Recognizes endogenous levels of ITIH4 protein. |
| Dilution | WB~~WB (1/500 - 1/1000) |
| Format | Liquid in 0.42% Potassium phosphate, 0.87% Sodium chloride, pH 7.3, 30% glycerol, and 0.09% (W/V) sodium azide. |
| Storage | Store at -20 °C.Stable for 12 months from date of receipt |

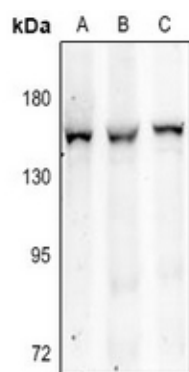
Protein Information

| | |
|-------------------|--|
| Name | ITIH4 |
| Synonyms | IHRP, ITIHL1, PK120 |
| Function | Type II acute-phase protein (APP) involved in inflammatory responses to trauma. May also play a role in liver development or regeneration. |
| Cellular Location | Secreted. |
| Tissue Location | Liver specific. |

Background

KLH-conjugated synthetic peptide encompassing a sequence within the center region of human ITIH4. The exact sequence is proprietary.

Images



Western blot analysis of ITIH4 expression in rat liver (A), HepG2 (B), H1792 (C) whole cell lysates.

Please note: All products are 'FOR RESEARCH USE ONLY. NOT FOR USE IN DIAGNOSTIC OR THERAPEUTIC PROCEDURES'.