

Anti-CD337 Antibody

Rabbit polyclonal antibody to CD337

Catalog # AP61340

Product Information

Application	WB
Primary Accession	O14931
Reactivity	Human, Mouse
Host	Rabbit
Clonality	Polyclonal
Calculated MW	21593

Additional Information

Gene ID	259197
Other Names	1C7; LY117; Natural cytotoxicity triggering receptor 3; Activating natural killer receptor p30; Natural killer cell p30-related protein; NK-p30; NKp30; CD337
Target/Specificity	KLH-conjugated synthetic peptide encompassing a sequence within the center region of human CD337. The exact sequence is proprietary.
Dilution	WB~~WB (1/500 - 1/1000)
Format	Liquid in 0.42% Potassium phosphate, 0.87% Sodium chloride, pH 7.3, 30% glycerol, and 0.09% (W/V) sodium azide.
Storage	Store at -20 °C.Stable for 12 months from date of receipt

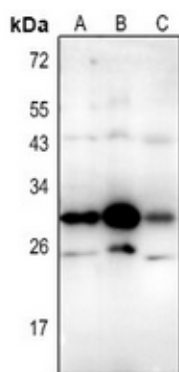
Protein Information

Name	NCR3 (HGNC:19077)
Synonyms	1C7, LY117
Function	Cell membrane receptor of natural killer/NK cells that is activated by binding of extracellular ligands including BAG6 and NCR3LG1. Stimulates NK cells cytotoxicity toward neighboring cells producing these ligands. It controls, for instance, NK cells cytotoxicity against tumor cells. Engagement of NCR3 by BAG6 also promotes myeloid dendritic cells (DC) maturation, both through killing DCs that did not acquire a mature phenotype, and inducing the release by NK cells of TNFA and IFNG which promote DC maturation.
Cellular Location	Cell membrane; Single-pass type I membrane protein
Tissue Location	Selectively expressed by all resting and activated NK cells and weakly expressed in spleen. {ECO:0000269 PubMed:10562324, ECO:0000269 Ref.2}

Background

KLH-conjugated synthetic peptide encompassing a sequence within the center region of human CD337. The exact sequence is proprietary.

Images



Western blot analysis of CD337 expression in Myla2059 (A), K562 (B), mouse spleen (C) whole cell lysates.

Please note: All products are 'FOR RESEARCH USE ONLY. NOT FOR USE IN DIAGNOSTIC OR THERAPEUTIC PROCEDURES'.