

Anti-GSTT1 Antibody

Rabbit polyclonal antibody to GSTT1

Catalog # AP61332

Product Information

Application	WB
Primary Accession	P30711
Reactivity	Human, Mouse, Rat
Host	Rabbit
Clonality	Polyclonal
Calculated MW	27335

Additional Information

Gene ID	2952
Other Names	GSTT1; Glutathione S-transferase theta-1; GST class-theta-1; Glutathione transferase T1-1; GSTT4; Glutathione S-transferase theta-4; GST class-theta-4
Target/Specificity	KLH-conjugated synthetic peptide encompassing a sequence within the N-term region of human GSTT1. The exact sequence is proprietary.
Dilution	WB~~WB (1/500 - 1/1000)
Format	Liquid in 0.42% Potassium phosphate, 0.87% Sodium chloride, pH 7.3, 30% glycerol, and 0.09% (W/V) sodium azide.
Storage	Store at -20 °C.Stable for 12 months from date of receipt

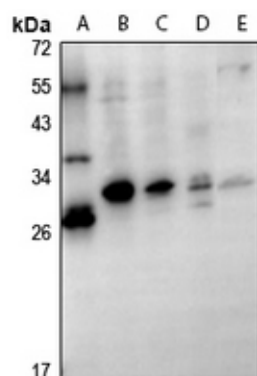
Protein Information

Name	GSTT1
Function	Conjugation of reduced glutathione to a wide number of exogenous and endogenous hydrophobic electrophiles. Acts on 1,2-epoxy-3-(4-nitrophenoxy)propane, phenethylisothiocyanate 4-nitrobenzyl chloride and 4-nitrophenethyl bromide. Displays glutathione peroxidase activity with cumene hydroperoxide.
Cellular Location	Cytoplasm.
Tissue Location	Found in erythrocyte. Expressed at low levels in liver. In lung, expressed at low levels in club cells and ciliated cells at the alveolar/bronchiolar junction. Absent from epithelial cells of larger bronchioles.

Background

KLH-conjugated synthetic peptide encompassing a sequence within the N-term region of human GSTT1. The exact sequence is proprietary.

Images



Western blot analysis of GSTT1 expression in mouse lung (A), K562 (B), Jurkat (C), HCC827 (D), H9C2 (E) whole cell lysates.

Please note: All products are 'FOR RESEARCH USE ONLY. NOT FOR USE IN DIAGNOSTIC OR THERAPEUTIC PROCEDURES'.