

# Anti-Carboxypeptidase M Antibody

Rabbit polyclonal antibody to Carboxypeptidase M

Catalog # AP61327

## Product Information

---

<b>Application</b>	WB
<b>Primary Accession</b>	<a href="#">P14384</a>
<b>Other Accession</b>	<a href="#">Q80V42</a>
<b>Reactivity</b>	Human, Mouse, Rat, Monkey
<b>Host</b>	Rabbit
<b>Clonality</b>	Polyclonal
<b>Calculated MW</b>	50514

## Additional Information

---

<b>Gene ID</b>	1368
<b>Other Names</b>	Carboxypeptidase M; CPM
<b>Target/Specificity</b>	KLH-conjugated synthetic peptide encompassing a sequence within the center region of human Carboxypeptidase M. The exact sequence is proprietary.
<b>Dilution</b>	WB~~WB (1/500 - 1/1000)
<b>Format</b>	Liquid in 0.42% Potassium phosphate, 0.87% Sodium chloride, pH 7.3, 30% glycerol, and 0.09% (W/V) sodium azide.
<b>Storage</b>	Store at -20 °C.Stable for 12 months from date of receipt

## Protein Information

---

<b>Name</b>	CPM
<b>Function</b>	Specifically removes C-terminal basic residues (Arg or Lys) from peptides and proteins. It is believed to play important roles in the control of peptide hormone and growth factor activity at the cell surface, and in the membrane-localized degradation of extracellular proteins.
<b>Cellular Location</b>	Cell membrane; Lipid-anchor, GPI-anchor

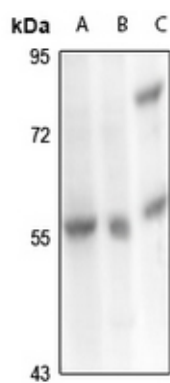
## Background

---

KLH-conjugated synthetic peptide encompassing a sequence within the center region of human Carboxypeptidase M. The exact sequence is proprietary.

## Images

---



Western blot analysis of Carboxypeptidase M expression in rat kidney (A), PC3 (B), mouse kidney (C) whole cell lysates.

Please note: All products are 'FOR RESEARCH USE ONLY. NOT FOR USE IN DIAGNOSTIC OR THERAPEUTIC PROCEDURES'.