

# Anti-AMPD3 Antibody

Rabbit polyclonal antibody to AMPD3

Catalog # AP61324

## Product Information

---

Application	WB, IHC
Primary Accession	<a href="#">Q01432</a>
Reactivity	Human
Host	Rabbit
Clonality	Polyclonal
Calculated MW	88812

## Additional Information

---

Gene ID	272
Other Names	AMP deaminase 3; AMP deaminase isoform E; Erythrocyte AMP deaminase
Target/Specificity	Recognizes endogenous levels of AMPD3 protein.
Dilution	WB~~WB (1/500 - 1/1000), IHC (1/50 - 1/200) IHC~~WB (1/500 - 1/1000), IHC (1/50 - 1/200)
Format	Liquid in 0.42% Potassium phosphate, 0.87% Sodium chloride, pH 7.3, 30% glycerol, and 0.09% (W/V) sodium azide.
Storage	Store at -20 °C.Stable for 12 months from date of receipt

## Protein Information

---

Name	AMPD3 ( <a href="#">HGNC:470</a> )
Function	AMP deaminase plays a critical role in energy metabolism.

## Background

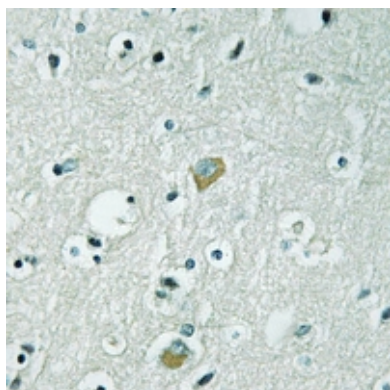
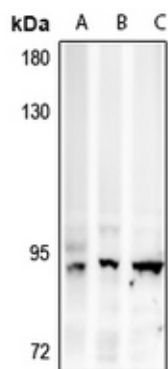
---

KLH-conjugated synthetic peptide encompassing a sequence within the center region of human AMPD3. The exact sequence is proprietary.

## Images

---

Western blot analysis of AMPD3 expression in HCT116 (A), HEK293T (B), MCF7 (C) whole cell lysates.



Immunohistochemical analysis of AMPD3 staining in human brain formalin fixed paraffin embedded tissue section. The section was pre-treated using heat mediated antigen retrieval with sodium citrate buffer (pH 6.0). The section was then incubated with the antibody at room temperature and detected using an HRP conjugated compact polymer system. DAB was used as the chromogen. The section was then counterstained with haematoxylin and mounted with DPX.

Please note: All products are 'FOR RESEARCH USE ONLY. NOT FOR USE IN DIAGNOSTIC OR THERAPEUTIC PROCEDURES'.