

# Anti-HPK1 Antibody

Rabbit polyclonal antibody to HPK1  
Catalog # AP61314

## Product Information

---

<b>Application</b>	WB
<b>Primary Accession</b>	<a href="#">Q92918</a>
<b>Other Accession</b>	<a href="#">P70218</a>
<b>Reactivity</b>	Human, Mouse, Monkey, Pig, Bovine, Drosophila
<b>Host</b>	Rabbit
<b>Clonality</b>	Polyclonal
<b>Calculated MW</b>	91296

## Additional Information

---

<b>Gene ID</b>	11184
<b>Other Names</b>	HPK1; Mitogen-activated protein kinase kinase kinase 1; Hematopoietic progenitor kinase; MAPK/ERK kinase kinase 1; MEK kinase kinase 1; MEKKK 1
<b>Target/Specificity</b>	KLH-conjugated synthetic peptide encompassing a sequence within the center region of human HPK1. The exact sequence is proprietary.
<b>Dilution</b>	WB--WB (1/500 - 1/1000)
<b>Format</b>	Liquid in 0.42% Potassium phosphate, 0.87% Sodium chloride, pH 7.3, 30% glycerol, and 0.09% (W/V) sodium azide.
<b>Storage</b>	Store at -20 °C. Stable for 12 months from date of receipt

## Protein Information

---

<b>Name</b>	MAP4K1 ( <a href="#">HGNC:6863</a> )
<b>Synonyms</b>	HPK1
<b>Function</b>	Serine/threonine-protein kinase, which plays a role in the response to environmental stress (PubMed: <a href="#">24362026</a> ). Appears to act upstream of the JUN N-terminal pathway (PubMed: <a href="#">8824585</a> ). Activator of the Hippo signaling pathway which plays a pivotal role in organ size control and tumor suppression by restricting proliferation and promoting apoptosis. MAP4Ks act in parallel to and are partially redundant with STK3/MST2 and STK4/MST2 in the phosphorylation and activation of LATS1/2, and establish MAP4Ks as components of the expanded Hippo pathway (PubMed: <a href="#">26437443</a> ). May play a role in hematopoietic lineage decisions and growth regulation (PubMed: <a href="#">24362026</a> , PubMed: <a href="#">8824585</a> ). Together with CLNK, it enhances

CD3-triggered activation of T-cells and subsequent IL2 production (By similarity).

### Tissue Location

Expressed primarily in hematopoietic organs, including bone marrow, spleen and thymus. Also expressed at very low levels in lung, kidney, mammary glands and small intestine

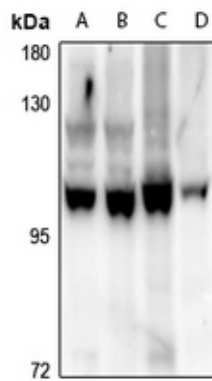
## Background

---

KLH-conjugated synthetic peptide encompassing a sequence within the center region of human HPK1. The exact sequence is proprietary.

## Images

---



Western blot analysis of HPK1 expression in A549 (A), Myla2059 (B), Jurkat (C), SP20 (D) whole cell lysates.

Please note: All products are 'FOR RESEARCH USE ONLY. NOT FOR USE IN DIAGNOSTIC OR THERAPEUTIC PROCEDURES'.