

Anti-p73 Antibody

Rabbit polyclonal antibody to p73

Catalog # AP61296

Product Information

Application	WB, IHC
Primary Accession	Q15350
Other Accession	Q9JJP2
Reactivity	Human, Mouse, Rat, Monkey, Chicken, Drosophila
Host	Rabbit
Clonality	Polyclonal
Calculated MW	69623

Additional Information

Gene ID	7161
Other Names	P73; Tumor protein p73; p53-like transcription factor; p53-related protein
Target/Specificity	KLH-conjugated synthetic peptide encompassing a sequence within the center region of human p73. The exact sequence is proprietary.
Dilution	WB~~WB (1/500 - 1/1000), IHC (1/50 - 1/200) IHC~~WB (1/500 - 1/1000), IHC (1/50 - 1/200)
Format	Liquid in 0.42% Potassium phosphate, 0.87% Sodium chloride, pH 7.3, 30% glycerol, and 0.09% (W/V) sodium azide.
Storage	Store at -20 °C.Stable for 12 months from date of receipt

Protein Information

Name	TP73
Synonyms	P73
Function	Participates in the apoptotic response to DNA damage. Isoforms containing the transactivation domain are pro-apoptotic, isoforms lacking the domain are anti-apoptotic and block the function of p53 and transactivating p73 isoforms. May be a tumor suppressor protein. Is an activator of FOXJ1 expression (By similarity). It is an essential factor for the positive regulation of lung ciliated cell differentiation (PubMed: 34077761).
Cellular Location	Nucleus. Cytoplasm. Note=Accumulates in the nucleus in response to DNA damage Expressed in striatal neurons of patients with Huntington disease (at protein

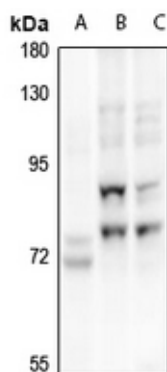
Tissue Location

level). Brain, kidney, placenta, colon, heart, liver, spleen, skeletal muscle, prostate, thymus and pancreas Highly expressed in fetal tissue. Expressed in the respiratory epithelium (PubMed:34077761).

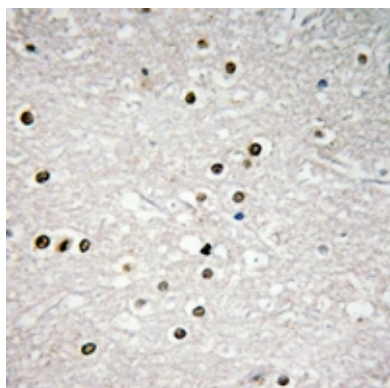
Background

KLH-conjugated synthetic peptide encompassing a sequence within the center region of human p73. The exact sequence is proprietary.

Images



Western blot analysis of p73 expression in rat kidney (A), HCT116 (B), HepG2 (C) whole cell lysates.



Immunohistochemical analysis of p73 staining in human brain formalin fixed paraffin embedded tissue section. The section was pre-treated using heat mediated antigen retrieval with sodium citrate buffer (pH 6.0). The section was then incubated with the antibody at room temperature and detected using an HRP conjugated compact polymer system. DAB was used as the chromogen. The section was then counterstained with haematoxylin and mounted with DPX.

Please note: All products are 'FOR RESEARCH USE ONLY. NOT FOR USE IN DIAGNOSTIC OR THERAPEUTIC PROCEDURES'.