

Anti-GLUR1 (pS863) Antibody

Rabbit polyclonal antibody to GLUR1 (pS863)

Catalog # AP61257

Product Information

Application	WB, IHC
Primary Accession	P42261
Other Accession	P23818
Reactivity	Human, Mouse, Rat
Host	Rabbit
Clonality	Polyclonal
Calculated MW	101506

Additional Information

Gene ID	2890
Other Names	GLUH1; GLUR1; Glutamate receptor 1; GluR-1; AMPA-selective glutamate receptor 1; GluR-A; GluR-K1; Glutamate receptor ionotropic AMPA 1; GluA1
Target/Specificity	KLH-conjugated synthetic peptide encompassing a sequence within the C-term region of human GLUR1 (pS863). The exact sequence is proprietary.
Dilution	WB~~WB (1/500 - 1/1000), IHC (1/50 - 1/200) IHC~~WB (1/500 - 1/1000), IHC (1/50 - 1/200)
Format	Liquid in 0.42% Potassium phosphate, 0.87% Sodium chloride, pH 7.3, 30% glycerol, and 0.09% (W/V) sodium azide.
Storage	Store at -20 °C.Stable for 12 months from date of receipt

Protein Information

Name	GRIA1 (HGNC:4571)
Function	Ionotropic glutamate receptor that functions as a ligand- gated cation channel, gated by L-glutamate and glutamatergic agonists such as alpha-amino-3-hydroxy-5-methyl-4-isoxazolepropionic acid (AMPA), quisqualic acid, and kainic acid (PubMed: 1311100 , PubMed: 20805473 , PubMed: 21172611 , PubMed: 28628100 , PubMed: 35675825). L- glutamate acts as an excitatory neurotransmitter at many synapses in the central nervous system. Binding of the excitatory neurotransmitter L-glutamate induces a conformation change, leading to the opening of the cation channel, and thereby converts the chemical signal to an electrical impulse upon entry of monovalent and divalent cations such as sodium and calcium. The receptor then desensitizes rapidly and enters in a transient inactive state, characterized by the presence of bound agonist (By similarity). In the

presence of CACNG2 or CACNG4 or CACNG7 or CACNG8, shows resensitization which is characterized by a delayed accumulation of current flux upon continued application of L- glutamate (PubMed:[21172611](#)). Resensitization is blocked by CNIH2 through interaction with CACNG8 in the CACNG8-containing AMPA receptors complex (PubMed:[21172611](#)). Calcium (Ca(2+)) permeability depends on subunits composition and, heteromeric channels containing edited GRIA2 subunit are calcium-impermeable. Also permeable to other divalents cations such as strontium(2+) and magnesium(2+) and monovalent cations such as potassium(1+) and lithium(1+) (By similarity).

Cellular Location

Cell membrane; Multi-pass membrane protein. Endoplasmic reticulum membrane {ECO:0000250|UniProtKB:P19490}; Multi-pass membrane protein {ECO:0000250|UniProtKB:P19490}. Postsynaptic cell membrane; Multi-pass membrane protein. Postsynaptic density membrane {ECO:0000250|UniProtKB:P23818}; Multi-pass membrane protein {ECO:0000250|UniProtKB:P23818}. Cell projection, dendrite {ECO:0000250|UniProtKB:P23818}. Cell projection, dendritic spine {ECO:0000250|UniProtKB:P23818}. Early endosome membrane {ECO:0000250|UniProtKB:P19490}; Multi-pass membrane protein {ECO:0000250|UniProtKB:P19490}. Recycling endosome membrane {ECO:0000250|UniProtKB:P19490}; Multi-pass membrane protein {ECO:0000250|UniProtKB:P19490}. Presynapse {ECO:0000250|UniProtKB:P23818}. Synapse {ECO:0000250|UniProtKB:P23818} Note=Interaction with CACNG2, CNIH2 and CNIH3 promotes cell surface expression. Colocalizes with PDLIM4 in early endosomes. Displays a somatodendritic localization and is excluded from axons in neurons (By similarity). Localized to cone photoreceptor pedicles (By similarity) {ECO:0000250|UniProtKB:P19490, ECO:0000250|UniProtKB:P23818}

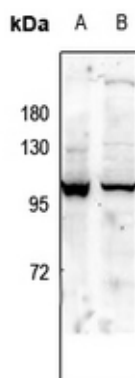
Tissue Location

Widely expressed in brain.

Background

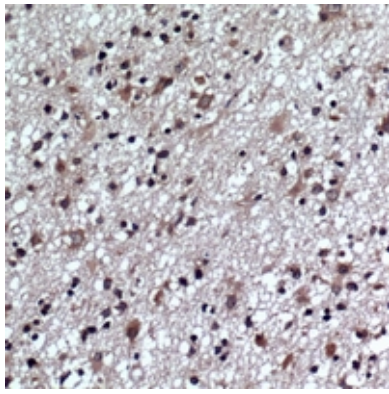
KLH-conjugated synthetic peptide encompassing a sequence within the C-term region of human GLUR1 (pS863). The exact sequence is proprietary.

Images



Western blot analysis of GLUR1 (pS863) expression in HCT116 (A), U87MG (B) whole cell lysates.

Immunohistochemical analysis of GLUR1 (pS863) staining in human brain formalin fixed paraffin embedded tissue section. The section was pre-treated using heat mediated antigen retrieval with sodium citrate buffer (pH 6.0). The section was then incubated with the antibody at room



temperature and detected using an HRP conjugated compact polymer system. DAB was used as the chromogen. The section was then counterstained with haematoxylin and mounted with DPX.

Please note: All products are 'FOR RESEARCH USE ONLY. NOT FOR USE IN DIAGNOSTIC OR THERAPEUTIC PROCEDURES'.