

# Anti-p23 (pS113) Antibody

Rabbit polyclonal antibody to p23 (pS113)

Catalog # AP61250

## Product Information

Application	WB, IHC
Primary Accession	<a href="#">Q15185</a>
Other Accession	<a href="#">Q9R0Q7</a>
Reactivity	Human, Mouse, Rat, Monkey, Chicken, Bovine
Host	Rabbit
Clonality	Polyclonal
Calculated MW	18697

## Additional Information

Gene ID	10728
Other Names	P23; TEBP; Prostaglandin E synthase 3; Cytosolic prostaglandin E2 synthase; cPGES; Hsp90 co-chaperone; Progesterone receptor complex p23; Telomerase-binding protein p23
Target/Specificity	KLH-conjugated synthetic peptide encompassing a sequence within the center region of human p23 (pS113). The exact sequence is proprietary.
Dilution	WB~~WB (1/500 - 1/1000), IHC (1/50 - 1/200) IHC~~WB (1/500 - 1/1000), IHC (1/50 - 1/200)
Format	Liquid in 0.42% Potassium phosphate, 0.87% Sodium chloride, pH 7.3, 30% glycerol, and 0.09% (W/V) sodium azide.
Storage	Store at -20 °C. Stable for 12 months from date of receipt

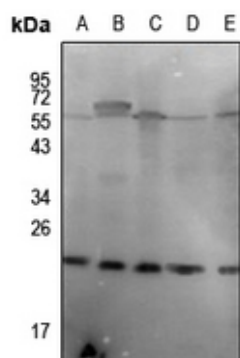
## Protein Information

Name	PTGES3
Synonyms	P23, TEBP
Function	Cytosolic prostaglandin synthase that catalyzes the oxidoreduction of prostaglandin endoperoxide H <sub>2</sub> (PGH <sub>2</sub> ) to prostaglandin E <sub>2</sub> (PGE <sub>2</sub> ) (PubMed: <a href="#">10922363</a> ). Molecular chaperone that localizes to genomic response elements in a hormone-dependent manner and disrupts receptor-mediated transcriptional activation, by promoting disassembly of transcriptional regulatory complexes (PubMed: <a href="#">11274138</a> , PubMed: <a href="#">12077419</a> ). Facilitates HIF alpha proteins hydroxylation via interaction with EGLN1/PHD2, leading to recruit EGLN1/PHD2 to the HSP90 pathway (PubMed: <a href="#">24711448</a> ).

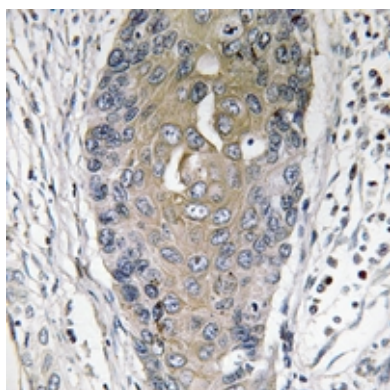
## Background

KLH-conjugated synthetic peptide encompassing a sequence within the center region of human p23 (pS113). The exact sequence is proprietary.

## Images



Western blot analysis of p23 (pS113) expression in C6 (A), rat testis (B), Myla2059 (C), U87MG (D), SKOVCA3 (E) whole cell lysates.



Immunohistochemical analysis of p23 (pS113) staining in human lung cancer formalin fixed paraffin embedded tissue section. The section was pre-treated using heat mediated antigen retrieval with sodium citrate buffer (pH 6.0). The section was then incubated with the antibody at room temperature and detected using an HRP conjugated compact polymer system. DAB was used as the chromogen. The section was then counterstained with haematoxylin and mounted with DPX.

Please note: All products are 'FOR RESEARCH USE ONLY. NOT FOR USE IN DIAGNOSTIC OR THERAPEUTIC PROCEDURES'.