

Anti-CD108 Antibody

Rabbit polyclonal antibody to CD108

Catalog # AP61244

Product Information

Application	WB, IHC
Primary Accession	075326
Reactivity	Human
Host	Rabbit
Clonality	Polyclonal
Calculated MW	74824

Additional Information

Gene ID	8482
Other Names	CD108; SEMAL; Semaphorin-7A; CDw108; JMH blood group antigen; John-Milton-Hargen human blood group Ag; Semaphorin-K1; Sema K1; Semaphorin-L; Sema L; CD108
Target/Specificity	KLH-conjugated synthetic peptide encompassing a sequence within the center region of human CD108. The exact sequence is proprietary.
Dilution	WB~~WB (1/500 - 1/1000), IHC (1/50 - 1/200) IHC~~WB (1/500 - 1/1000), IHC (1/50 - 1/200)
Format	Liquid in 0.42% Potassium phosphate, 0.87% Sodium chloride, pH 7.3, 30% glycerol, and 0.09% (W/V) sodium azide.
Storage	Store at -20 °C.Stable for 12 months from date of receipt

Protein Information

Name	SEMA7A
Synonyms	CD108, SEMAL
Function	Plays an important role in integrin-mediated signaling and functions both in regulating cell migration and immune responses. Promotes formation of focal adhesion complexes, activation of the protein kinase PTK2/FAK1 and subsequent phosphorylation of MAPK1 and MAPK3. Promotes production of pro-inflammatory cytokines by monocytes and macrophages. Plays an important role in modulating inflammation and T-cell-mediated immune responses. Promotes axon growth in the embryonic olfactory bulb. Promotes attachment, spreading and dendrite outgrowth in melanocytes.
Cellular Location	Cell membrane; Lipid-anchor, GPI-anchor; Extracellular side. Note=Detected

in a punctate pattern on the cell membrane of basal and supra-basal skin keratinocytes

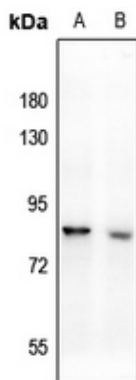
Tissue Location

Detected in skin keratinocytes and on endothelial cells from skin blood vessels (at protein level). Expressed in fibroblasts, keratinocytes, melanocytes, placenta, testis, ovary, spleen, brain, spinal cord, lung, heart, adrenal gland, lymph nodes, thymus, intestine and kidney.

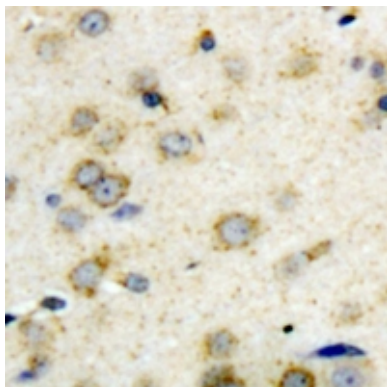
Background

KLH-conjugated synthetic peptide encompassing a sequence within the center region of human CD108. The exact sequence is proprietary.

Images



Western blot analysis of CD108 expression in A375 (A), SKOVCA3 (B) whole cell lysates.



Immunohistochemical analysis of CD108 staining in human brain formalin fixed paraffin embedded tissue section. The section was pre-treated using heat mediated antigen retrieval with sodium citrate buffer (pH 6.0). The section was then incubated with the antibody at room temperature and detected using an HRP conjugated compact polymer system. DAB was used as the chromogen. The section was then counterstained with haematoxylin and mounted with DPX.

Please note: All products are 'FOR RESEARCH USE ONLY. NOT FOR USE IN DIAGNOSTIC OR THERAPEUTIC PROCEDURES'.