

# Anti-Occludin Antibody

Rabbit polyclonal antibody to Occludin  
Catalog # AP61238

## Product Information

---

Application	WB
Primary Accession	<a href="#">Q16625</a>
Other Accession	<a href="#">Q61146</a>
Reactivity	Human, Mouse, Rat, Drosophila
Host	Rabbit
Clonality	Polyclonal
Calculated MW	59144

## Additional Information

---

Gene ID	100506658
Other Names	Occludin
Target/Specificity	KLH-conjugated synthetic peptide encompassing a sequence within the C-term region of human Occludin. The exact sequence is proprietary.
Dilution	WB~~WB (1/500 - 1/1000)
Format	Liquid in 0.42% Potassium phosphate, 0.87% Sodium chloride, pH 7.3, 30% glycerol, and 0.09% (W/V) sodium azide.
Storage	Store at -20 °C.Stable for 12 months from date of receipt

## Protein Information

---

Name	OCLN
Function	May play a role in the formation and regulation of the tight junction (TJ) paracellular permeability barrier. It is able to induce adhesion when expressed in cells lacking tight junctions.
Cellular Location	Cell membrane; Multi-pass membrane protein. Cell junction, tight junction
Tissue Location	Localized at tight junctions of both epithelial and endothelial cells. Highly expressed in kidney. Not detected in testis

## Background

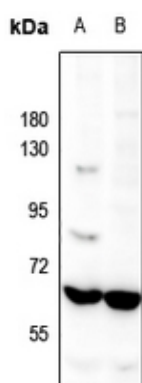
---

KLH-conjugated synthetic peptide encompassing a sequence within the C-term region of human Occludin.

The exact sequence is proprietary.

## Images

---



Western blot analysis of Occludin expression in mouse kidney (A), rat kidney (B) whole cell lysates.

Please note: All products are 'FOR RESEARCH USE ONLY. NOT FOR USE IN DIAGNOSTIC OR THERAPEUTIC PROCEDURES'.