

# Anti-MGST1 Antibody

Rabbit polyclonal antibody to MGST1

Catalog # AP61218

## Product Information

---

<b>Application</b>	WB
<b>Primary Accession</b>	<a href="#">P10620</a>
<b>Reactivity</b>	Human, Rat, Bovine
<b>Host</b>	Rabbit
<b>Clonality</b>	Polyclonal
<b>Calculated MW</b>	17599

## Additional Information

---

<b>Gene ID</b>	4257
<b>Other Names</b>	GST12; MGST; Microsomal glutathione S-transferase 1; Microsomal GST-1; Microsomal GST-I
<b>Target/Specificity</b>	KLH-conjugated synthetic peptide encompassing a sequence within the center region of human MGST1. The exact sequence is proprietary.
<b>Dilution</b>	WB~~WB (1/500 - 1/1000)
<b>Format</b>	Liquid in 0.42% Potassium phosphate, 0.87% Sodium chloride, pH 7.3, 30% glycerol, and 0.09% (W/V) sodium azide.
<b>Storage</b>	Store at -20 °C.Stable for 12 months from date of receipt

## Protein Information

---

<b>Name</b>	MGST1
<b>Synonyms</b>	GST12, MGST
<b>Function</b>	Conjugation of reduced glutathione to a wide number of exogenous and endogenous hydrophobic electrophiles.
<b>Cellular Location</b>	Endoplasmic reticulum membrane {ECO:0000250 UniProtKB:P08011}; Multi-pass membrane protein. Mitochondrion outer membrane {ECO:0000250 UniProtKB:P08011}
<b>Tissue Location</b>	Highly expressed in liver.

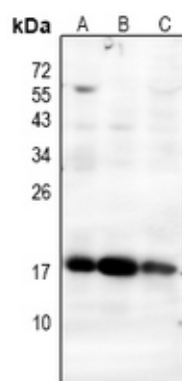
## Background

---

KLH-conjugated synthetic peptide encompassing a sequence within the center region of human MGST1. The exact sequence is proprietary.

## Images

---



Western blot analysis of MGST1 expression in rat liver (A), HCC827 (B), HepG2 (C) whole cell lysates.

Please note: All products are 'FOR RESEARCH USE ONLY. NOT FOR USE IN DIAGNOSTIC OR THERAPEUTIC PROCEDURES'.