

Anti-RCL Antibody

Rabbit polyclonal antibody to RCL
Catalog # AP61208

Product Information

Application	WB
Primary Accession	Q43598
Other Accession	Q80VJ3
Reactivity	Human, Mouse, Rat
Host	Rabbit
Clonality	Polyclonal
Calculated MW	19108

Additional Information

Gene ID	10591
Other Names	C6orf108; RCL; 2'-deoxynucleoside 5'-phosphate N-hydrolase 1; c-Myc-responsive protein RCL
Target/Specificity	KLH-conjugated synthetic peptide encompassing a sequence within the N-term region of human RCL. The exact sequence is proprietary.
Dilution	WB~~WB (1/500 - 1/1000)
Format	Liquid in 0.42% Potassium phosphate, 0.87% Sodium chloride, pH 7.3, 30% glycerol, and 0.09% (W/V) sodium azide.
Storage	Store at -20 °C.Stable for 12 months from date of receipt

Protein Information

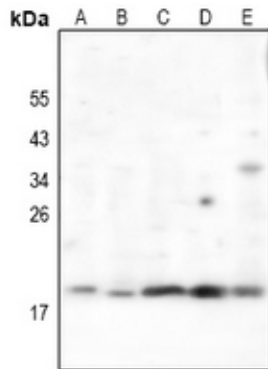
Name	DNPH1 (HGNC:21218)
Function	Part of a nucleotide salvage pathway that eliminates epigenetically modified 5-hydroxymethyl-dCMP (hmdCMP) in a two-step process entailing deamination to cytotoxic 5-hydroxymethyl-dUMP (hmdUMP), followed by its hydrolysis into 5-hydroxymethyluracil (hmU) and 2-deoxy-D-ribose 5-phosphate (deoxyribosephosphate) (PubMed: 33833118). Catalyzes the second step in that pathway, the hydrolysis of the N-glycosidic bond in hmdUMP, degrading this cytotoxic nucleotide to avoid its genomic integration (PubMed: 33833118).
Cellular Location	Cytoplasm. Nucleus
Tissue Location	Expressed at low levels in brain, colon, lung, peripheral blood leukocytes, placenta, small intestine, and thymus Expressed at high levels in heart,

kidney, liver, skeletal muscle and spleen. Overexpressed in a significant proportion of breast cancers

Background

KLH-conjugated synthetic peptide encompassing a sequence within the N-term region of human RCL. The exact sequence is proprietary.

Images



Western blot analysis of RCL expression in HepG2 (A), HEK293T (B), LO2 (C), PC12 (D), AML12 (E) whole cell lysates.

Please note: All products are 'FOR RESEARCH USE ONLY. NOT FOR USE IN DIAGNOSTIC OR THERAPEUTIC PROCEDURES'.