

Anti-OB Cadherin Antibody

Rabbit polyclonal antibody to OB Cadherin
Catalog # AP61201

Product Information

Application	WB
Primary Accession	P55287
Other Accession	P55288
Reactivity	Human, Mouse, Rat, Monkey
Host	Rabbit
Clonality	Polyclonal
Calculated MW	87965

Additional Information

Gene ID	1009
Other Names	Cadherin-11; OSF-4; Osteoblast cadherin; OB-cadherin
Target/Specificity	KLH-conjugated synthetic peptide encompassing a sequence within the center region of human OB Cadherin. The exact sequence is proprietary.
Dilution	WB~~WB (1/500 - 1/1000)
Format	Liquid in 0.42% Potassium phosphate, 0.87% Sodium chloride, pH 7.3, 30% glycerol, and 0.09% (W/V) sodium azide.
Storage	Store at -20 °C.Stable for 12 months from date of receipt

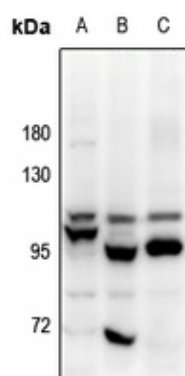
Protein Information

Name	CDH11
Function	Cadherins are calcium-dependent cell adhesion proteins. They preferentially interact with themselves in a homophilic manner in connecting cells; cadherins may thus contribute to the sorting of heterogeneous cell types. Required for proper focal adhesion assembly (PubMed: 33811546). Involved in the regulation of cell migration (PubMed: 33811546).
Cellular Location	Cell membrane; Single-pass type I membrane protein
Tissue Location	Expressed mainly in brain but also found in other tissues. Expressed in neuroblasts. In the embryo from 67 to 72 days of gestation, detected at high levels in facial mesenchyme including the central palatal mesenchyme, dental mesenchyme, the eye and optic muscle, and the tongue (at protein level) (PubMed: 33811546)

Background

KLH-conjugated synthetic peptide encompassing a sequence within the center region of human OB Cadherin. The exact sequence is proprietary.

Images



Western blot analysis of OB Cadherin expression in A2780 (A), HeLa (B), C6 (C) whole cell lysates.

Please note: All products are 'FOR RESEARCH USE ONLY. NOT FOR USE IN DIAGNOSTIC OR THERAPEUTIC PROCEDURES'.