

Anti-IP3R Antibody

Rabbit polyclonal antibody to IP3R
Catalog # AP61189

Product Information

Application	WB, IF/IC, IHC
Primary Accession	Q14643
Other Accession	P11881
Reactivity	Human, Mouse, Rat
Host	Rabbit
Clonality	Polyclonal

Additional Information

Other Names	INSP3R1; Inositol 145-trisphosphate receptor type 1; IP3 receptor isoform 1; IP3R 1; InsP3R1; Type 1 inositol 145-trisphosphate receptor; Type 1 InsP3 receptor
Target/Specificity	KLH-conjugated synthetic peptide encompassing a sequence within the center region of human IP3R. The exact sequence is proprietary.
Dilution	WB~~WB (1/500 - 1/1000), IHC (1/50 - 1/200), IF/IC (1/100 - 1/500) IF/IC~~N/A IHC~~WB (1/500 - 1/1000), IHC (1/50 - 1/200), IF/IC (1/100 - 1/500)
Format	Liquid in 0.42% Potassium phosphate, 0.87% Sodium chloride, pH 7.3, 30% glycerol, and 0.09% (W/V) sodium azide.
Storage	Store at -20 °C. Stable for 12 months from date of receipt

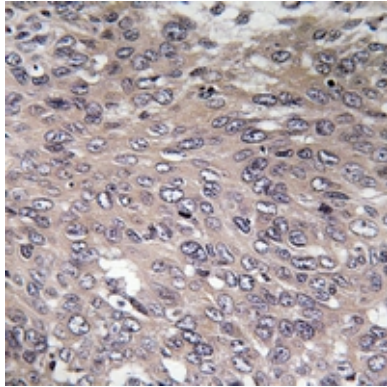
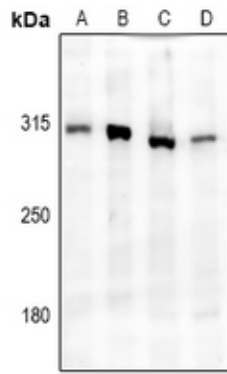
Protein Information

Background

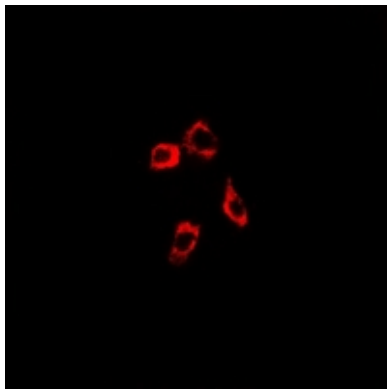
KLH-conjugated synthetic peptide encompassing a sequence within the center region of human IP3R. The exact sequence is proprietary.

Images

Western blot analysis of IP3R expression in mouse brain (A), rat brain (B), U87MG (C), SGC7901 (D) whole cell lysates.



Immunohistochemical analysis of IP3R staining in human cervix cancer formalin fixed paraffin embedded tissue section. The section was pre-treated using heat mediated antigen retrieval with sodium citrate buffer (pH 6.0). The section was then incubated with the antibody at room temperature and detected using an HRP conjugated compact polymer system. DAB was used as the chromogen. The section was then counterstained with haematoxylin and mounted with DPX.



Immunofluorescent analysis of IP3R staining in COS7 cells. Formalin-fixed cells were permeabilized with 0.1% Triton X-100 in TBS for 5-10 minutes and blocked with 3% BSA-PBS for 30 minutes at room temperature. Cells were probed with the primary antibody in 3% BSA-PBS and incubated overnight at 4 °C in a humidified chamber. Cells were washed with PBST and incubated with a Alexa Fluor 594-conjugated secondary antibody (red) in PBS at room temperature in the dark.

Please note: All products are 'FOR RESEARCH USE ONLY. NOT FOR USE IN DIAGNOSTIC OR THERAPEUTIC PROCEDURES'.