

Anti-Alpha-crystallin B Antibody

Rabbit polyclonal antibody to Alpha-crystallin B
Catalog # AP61187

Product Information

Application	WB, IHC
Primary Accession	P02511
Other Accession	P23927
Reactivity	Human, Mouse, Rat, Monkey
Host	Rabbit
Clonality	Polyclonal

Additional Information

Other Names	CRYA2; Alpha-crystallin B chain; Alpha(B)-crystallin; Heat shock protein beta-5; HspB5; Renal carcinoma antigen NY-REN-27; Rosenthal fiber component
Target/Specificity	KLH-conjugated synthetic peptide encompassing a sequence within the center region of human Alpha-crystallin B. The exact sequence is proprietary.
Dilution	WB~~WB (1/500 - 1/1000), IHC (1/50 - 1/200) IHC~~WB (1/500 - 1/1000), IHC (1/50 - 1/200)
Format	Liquid in 0.42% Potassium phosphate, 0.87% Sodium chloride, pH 7.3, 30% glycerol, and 0.09% (W/V) sodium azide.
Storage	Store at -20 °C. Stable for 12 months from date of receipt

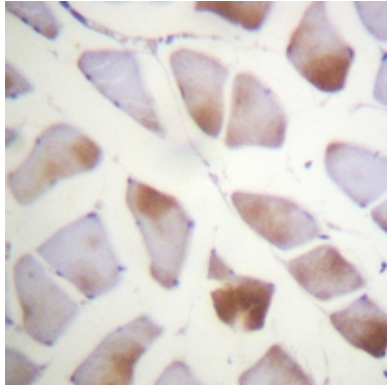
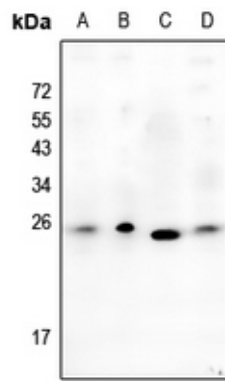
Protein Information

Background

KLH-conjugated synthetic peptide encompassing a sequence within the center region of human Alpha-crystallin B. The exact sequence is proprietary.

Images

Western blot analysis of Alpha-crystallin B expression in A549 (A), HEK293T (B), PMVEC (C), BV2 (D) whole cell lysates.



Immunohistochemical analysis of Alpha-crystallin B staining in human skeletal muscle formalin fixed paraffin embedded tissue section. The section was pre-treated using heat mediated antigen retrieval with sodium citrate buffer (pH 6.0). The section was then incubated with the antibody at room temperature and detected using an HRP conjugated compact polymer system. DAB was used as the chromogen. The section was then counterstained with haematoxylin and mounted with DPX.

Please note: All products are 'FOR RESEARCH USE ONLY. NOT FOR USE IN DIAGNOSTIC OR THERAPEUTIC PROCEDURES'.