

# Anti-CD127 (pY449) Antibody

Rabbit polyclonal antibody to CD127 (pY449)

Catalog # AP61169

## Product Information

<b>Application</b>	WB, IF/IC
<b>Primary Accession</b>	<a href="#">P16871</a>
<b>Reactivity</b>	Human
<b>Host</b>	Rabbit
<b>Clonality</b>	Polyclonal
<b>Calculated MW</b>	51579

## Additional Information

<b>Gene ID</b>	3575
<b>Other Names</b>	Interleukin-7 receptor subunit alpha; IL-7 receptor subunit alpha; IL-7R subunit alpha; IL-7R-alpha; IL-7RA; CDw127; CD127
<b>Target/Specificity</b>	KLH-conjugated synthetic peptide encompassing a sequence within the C-term region of human CD127 (pY449). The exact sequence is proprietary.
<b>Dilution</b>	WB~~WB (1/500 - 1/1000), IF/IC (1/100 - 1/500) IF/IC~~N/A
<b>Format</b>	Liquid in 0.42% Potassium phosphate, 0.87% Sodium chloride, pH 7.3, 30% glycerol, and 0.09% (W/V) sodium azide.
<b>Storage</b>	Store at -20 °C.Stable for 12 months from date of receipt

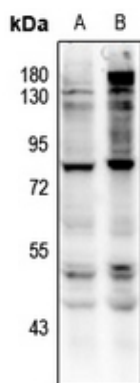
## Protein Information

<b>Name</b>	IL7R
<b>Function</b>	Receptor for interleukin-7. Also acts as a receptor for thymic stromal lymphopoietin (TSLP).
<b>Cellular Location</b>	[Isoform 1]: Cell membrane; Single-pass type I membrane protein [Isoform 4]: Secreted.

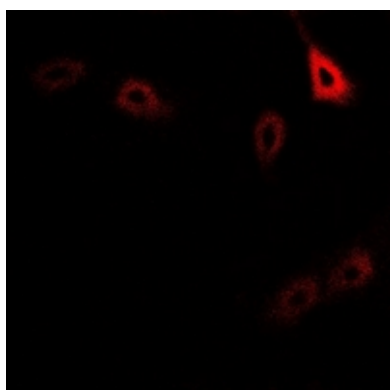
## Background

KLH-conjugated synthetic peptide encompassing a sequence within the C-term region of human CD127 (pY449). The exact sequence is proprietary.

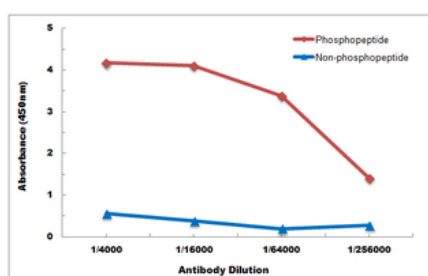
## Images



Western blot analysis of CD127 (pY449) expression in HCT116 (A), HEK293T (B) whole cell lysates.



Immunofluorescent analysis of CD127 (pY449) staining in HuvEc cells. Formalin-fixed cells were permeabilized with 0.1% Triton X-100 in TBS for 5-10 minutes and blocked with 3% BSA-PBS for 30 minutes at room temperature. Cells were probed with the primary antibody in 3% BSA-PBS and incubated overnight at 4 °C in a hidified chamber. Cells were washed with PBST and incubated with a Alexa Fluor 594-conjugated secondary antibody (red) in PBS at room temperature in the dark.



Direct ELISA antibody dose-response curve using Anti-CD127 (pY449) Antibody. Antigen (phosphopeptide and non-phosphopeptide) concentration is 5 ug/ml. Goat Anti-Rabbit IgG (H&L) - HRP was used as the secondary antibody, and signal was developed by TMB substrate.

Please note: All products are 'FOR RESEARCH USE ONLY. NOT FOR USE IN DIAGNOSTIC OR THERAPEUTIC PROCEDURES'.