

Anti-CD50 (pS518) Antibody

Rabbit polyclonal antibody to CD50 (pS518)
Catalog # AP61158

Product Information

Application	WB
Primary Accession	P32942
Reactivity	Human
Host	Rabbit
Clonality	Polyclonal
Calculated MW	59541

Additional Information

Gene ID	3385
Other Names	Intercellular adhesion molecule 3; ICAM-3; CDw50; ICAM-R; CD50
Target/Specificity	KLH-conjugated synthetic peptide encompassing a sequence within the C-term region of human CD50 (pS518). The exact sequence is proprietary.
Dilution	WB--WB (1/500 - 1/1000)
Format	Liquid in 0.42% Potassium phosphate, 0.87% Sodium chloride, pH 7.3, 30% glycerol, and 0.09% (W/V) sodium azide.
Storage	Store at -20 °C. Stable for 12 months from date of receipt

Protein Information

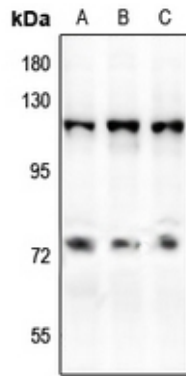
Name	ICAM3 (HGNC:5346)
Function	Cell adhesion molecule that functions as a receptor ligand of the signaling receptor ITGAL:ITGB2/LFA-1 (lymphocyte-function associated (LFA) molecule 1) ensuring apoptotic neutrophil phagocytosis by macrophages (PubMed: 1448173 , PubMed: 1448174 , PubMed: 23775590 , PubMed: 8325327 , PubMed: 8459213). Is also a ligand for integrin ITGAD/ITGB2 (PubMed: 8777714). Ligand of CD209 on dendritic cells (DC) through an integrin-independent mechanism that requires Ca(2+) and that forms a first contact between DC and resting T cell, facilitating the downstream DC-T cell clustering process and DC-induced proliferation of resting T Cells (PubMed: 10721994).
Cellular Location	Cell membrane; Single-pass type I membrane protein Note=Localization at uropodium is mediated through interaction with MSN.
Tissue Location	Constitutively expressed only on resting leukocytes (PubMed:8325327). No

expressed on resting or cytokine-activated endothelial cells
(PubMed:1448174).

Background

KLH-conjugated synthetic peptide encompassing a sequence within the C-term region of human CD50 (pS518). The exact sequence is proprietary.

Images



Western blot analysis of CD50 (pS518) expression in A375 (A), Jurkat (B), Myla2059 (C) whole cell lysates.

Please note: All products are 'FOR RESEARCH USE ONLY. NOT FOR USE IN DIAGNOSTIC OR THERAPEUTIC PROCEDURES'.