

Anti-NFAT1 (pS326) Antibody

Rabbit polyclonal antibody to NFAT1 (pS326)

Catalog # AP61143

Product Information

Application	WB
Primary Accession	Q13469
Reactivity	Human
Host	Rabbit
Clonality	Polyclonal
Calculated MW	100146

Additional Information

Gene ID	4773
Other Names	NFAT1; NFATP; Nuclear factor of activated T-cells cytoplasmic 2; NF-ATc2; NFATc2; NFAT pre-existing subunit; NF-ATp; T-cell transcription factor NFAT1
Target/Specificity	KLH-conjugated synthetic peptide encompassing a sequence within the center region of human NFAT1 (pS326). The exact sequence is proprietary.
Dilution	WB~~WB (1/500 - 1/1000)
Format	Liquid in 0.42% Potassium phosphate, 0.87% Sodium chloride, pH 7.3, 30% glycerol, and 0.09% (W/V) sodium azide.
Storage	Store at -20 °C.Stable for 12 months from date of receipt

Protein Information

Name	NFATC2
Synonyms	NFAT1, NFATP
Function	Plays a role in the inducible expression of cytokine genes in T-cells, especially in the induction of the IL-2, IL-3, IL-4, TNF-alpha or GM-CSF (PubMed: 15790681). Promotes invasive migration through the activation of GPC6 expression and WNT5A signaling pathway (PubMed: 21871017). Is involved in the negative regulation of chondrogenesis (PubMed: 35789258). Recruited by AKAP5 to ORAI1 pore- forming subunit of CRAC channels in Ca(2+) signaling microdomains where store-operated Ca(2+) influx is coupled to calmodulin and calcineurin signaling and activation of NFAT-dependent transcriptional responses.
Cellular Location	Cytoplasm. Nucleus. Note=Cytoplasmic for the phosphorylated form and nuclear after activation that is controlled by calcineurin-mediated

dephosphorylation. Rapid nuclear exit of NFATC is thought to be one mechanism by which cells distinguish between sustained and transient calcium signals. The subcellular localization of NFATC plays a key role in the regulation of gene transcription

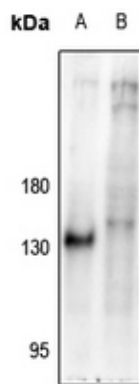
Tissue Location

Expressed in thymus, spleen, heart, testis, brain, placenta, muscle and pancreas. Isoform 1 is highly expressed in the small intestine, heart, testis, prostate, thymus, placenta and thyroid Isoform 3 is highly expressed in stomach, uterus, placenta, trachea and thyroid.

Background

KLH-conjugated synthetic peptide encompassing a sequence within the center region of human NFAT1 (pS326). The exact sequence is proprietary.

Images



Western blot analysis of NFAT1 (pS326) expression in Jurkat (A), Myla2059 (B) whole cell lysates.

Please note: All products are 'FOR RESEARCH USE ONLY. NOT FOR USE IN DIAGNOSTIC OR THERAPEUTIC PROCEDURES'.