

Anti-CD91 Antibody

Rabbit polyclonal antibody to CD91

Catalog # AP61116

Product Information

Application	WB, IHC
Primary Accession	Q07954
Other Accession	Q91ZX7
Reactivity	Human, Mouse
Host	Rabbit
Clonality	Polyclonal
Calculated MW	504606

Additional Information

Gene ID	4035
Other Names	A2MR; APR; Prolow-density lipoprotein receptor-related protein 1; LRP-1; Alpha-2-macroglobulin receptor; A2MR; Apolipoprotein E receptor; APOER; CD91
Target/Specificity	KLH-conjugated synthetic peptide encompassing a sequence within the C-term region of human CD91. The exact sequence is proprietary.
Dilution	WB~~WB (1/500 - 1/1000), IHC (1/50 - 1/100) IHC~~WB (1/500 - 1/1000), IHC (1/50 - 1/100)
Format	Liquid in 0.42% Potassium phosphate, 0.87% Sodium chloride, pH 7.3, 30% glycerol, and 0.09% (W/V) sodium azide.
Storage	Store at -20 °C.Stable for 12 months from date of receipt

Protein Information

Name	LRP1 (HGNC:6692)
Synonyms	A2MR, APR
Function	Endocytic receptor involved in endocytosis and in phagocytosis of apoptotic cells (PubMed: 11907044 , PubMed: 12713657). Required for early embryonic development (By similarity). Involved in cellular lipid homeostasis. Involved in the plasma clearance of chylomicron remnants and activated LRPAP1 (alpha 2-macroglobulin), as well as the local metabolism of complexes between plasminogen activators and their endogenous inhibitors. Acts as an LRPAP1 alpha-2- macroglobulin receptor (PubMed: 1702392 , PubMed: 26142438). Acts as TAU/MAPT receptor and controls the endocytosis of TAU/MAPT as well as its subsequent spread (PubMed: 32296178). May modulate cellular events,

such as APP metabolism, kinase-dependent intracellular signaling, neuronal calcium signaling as well as neurotransmission (PubMed:[12888553](#)). Also acts as a receptor for IGFBP3 to mediate cell growth inhibition (PubMed:[9252371](#)).

Cellular Location

[Low-density lipoprotein receptor-related protein 1 85 kDa subunit]: Cell membrane; Single-pass type I membrane protein Membrane, coated pit [Low-density lipoprotein receptor-related protein 1 intracellular domain]: Cytoplasm Nucleus. Note=After cleavage, the intracellular domain (LRP1CD) is detected both in the cytoplasm and in the nucleus.

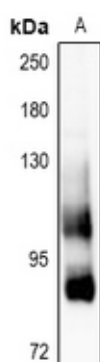
Tissue Location

Most abundant in liver, brain and lung.

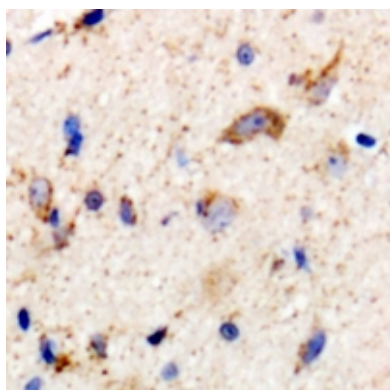
Background

KLH-conjugated synthetic peptide encompassing a sequence within the C-term region of human CD91. The exact sequence is proprietary.

Images



Western blot analysis of CD91 expression in H1792 (A) whole cell lysates.



Immunohistochemical analysis of CD91 staining in human brain formalin fixed paraffin embedded tissue section. The section was pre-treated using heat mediated antigen retrieval with sodium citrate buffer (pH 6.0). The section was then incubated with the antibody at room temperature and detected using an HRP conjugated compact polymer system. DAB was used as the chromogen. The section was then counterstained with haematoxylin and mounted with DPX.

Please note: All products are 'FOR RESEARCH USE ONLY. NOT FOR USE IN DIAGNOSTIC OR THERAPEUTIC PROCEDURES'.