

# Anti-PTP1B (pY66) Antibody

Rabbit polyclonal antibody to PTP1B (pY66)

Catalog # AP61103

## Product Information

---

<b>Application</b>	WB
<b>Primary Accession</b>	<a href="#">P18031</a>
<b>Other Accession</b>	<a href="#">P35821</a>
<b>Reactivity</b>	Human, Mouse, Rat
<b>Host</b>	Rabbit
<b>Clonality</b>	Polyclonal
<b>Calculated MW</b>	49967

## Additional Information

---

<b>Gene ID</b>	5770
<b>Other Names</b>	PTP1B; Tyrosine-protein phosphatase non-receptor type 1; Protein-tyrosine phosphatase 1B; PTP-1B
<b>Target/Specificity</b>	KLH-conjugated synthetic peptide encompassing a sequence within the N-term region of human PTP1B. The exact sequence is proprietary.
<b>Dilution</b>	WB~~WB (1/500 - 1/1000)
<b>Format</b>	Liquid in 0.42% Potassium phosphate, 0.87% Sodium chloride, pH 7.3, 30% glycerol, and 0.09% (W/V) sodium azide.
<b>Storage</b>	Store at -20 °C.Stable for 12 months from date of receipt

## Protein Information

---

<b>Name</b>	PTPN1
<b>Synonyms</b>	PTP1B
<b>Function</b>	Tyrosine-protein phosphatase which acts as a regulator of endoplasmic reticulum unfolded protein response. Mediates dephosphorylation of EIF2AK3/PERK; inactivating the protein kinase activity of EIF2AK3/PERK. May play an important role in CKII- and p60c- src-induced signal transduction cascades. May regulate the EFNA5-EPHA3 signaling pathway which modulates cell reorganization and cell-cell repulsion. May also regulate the hepatocyte growth factor receptor signaling pathway through dephosphorylation of MET.
<b>Cellular Location</b>	Endoplasmic reticulum membrane; Peripheral membrane protein; Cytoplasmic side Note=Interacts with EPHA3 at the cell membrane

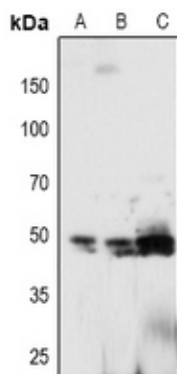
## Tissue Location

Expressed in keratinocytes (at protein level).

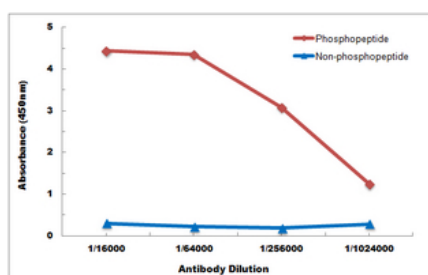
## Background

KLH-conjugated synthetic peptide encompassing a sequence within the N-term region of human PTP1B. The exact sequence is proprietary.

## Images



Western blot analysis of PTP1B (pY66) expression in MCF7 (A), A549 (B), mouse lung (C) whole cell lysates.



Direct ELISA antibody dose-response curve using Anti-PTP1B (pY66) Antibody. Antigen (phosphopeptide and non-phosphopeptide) concentration is 5 ug/ml. Goat Anti-Rabbit IgG (H&L) - HRP was used as the secondary antibody, and signal was developed by TMB substrate.

Please note: All products are 'FOR RESEARCH USE ONLY. NOT FOR USE IN DIAGNOSTIC OR THERAPEUTIC PROCEDURES'.