

Anti-Cyclin D1 (pT288) Antibody

Rabbit polyclonal antibody to Cyclin D1 (pT288)

Catalog # AP61099

Product Information

Application	WB
Primary Accession	P24385
Other Accession	P25322
Reactivity	Human, Mouse, Rat
Host	Rabbit
Clonality	Polyclonal
Calculated MW	33729

Additional Information

Gene ID	595
Other Names	BCL1; PRAD1; G1/S-specific cyclin-D1; B-cell lymphoma 1 protein; BCL-1; BCL-1 oncogene; PRAD1 oncogene
Target/Specificity	Recognizes endogenous levels of Cyclin D1 (pT288) protein.
Dilution	WB~~WB (1/500 - 1/1000)
Format	Liquid in 0.42% Potassium phosphate, 0.87% Sodium chloride, pH 7.3, 30% glycerol, and 0.09% (W/V) sodium azide.
Storage	Store at -20 °C.Stable for 12 months from date of receipt

Protein Information

Name	CCND1 {ECO:0000303 PubMed:8204893, ECO:0000312 HGNC:HGNC:1582}
Function	<p>Regulatory component of the cyclin D1-CDK4 (DC) complex that phosphorylates and inhibits members of the retinoblastoma (RB) protein family including RB1 and regulates the cell-cycle during G(1)/S transition (PubMed:1827756, PubMed:1833066, PubMed:19412162, PubMed:33854235, PubMed:8114739, PubMed:8302605). Phosphorylation of RB1 allows dissociation of the transcription factor E2F from the RB/E2F complex and the subsequent transcription of E2F target genes which are responsible for the progression through the G(1) phase (PubMed:1827756, PubMed:1833066, PubMed:19412162, PubMed:8114739, PubMed:8302605).</p> <p>Hypophosphorylates RB1 in early G(1) phase (PubMed:1827756, PubMed:1833066, PubMed:19412162, PubMed:8114739, PubMed:8302605).</p> <p>Cyclin D-CDK4 complexes are major integrators of various mitogenic and antimitogenic signals (PubMed:1827756, PubMed:1833066, PubMed:19412162, PubMed:8302605). Also a substrate for SMAD3,</p>

phosphorylating SMAD3 in a cell-cycle-dependent manner and repressing its transcriptional activity (PubMed:[15241418](#)). Component of the ternary complex, cyclin D1/CDK4/CDKN1B, required for nuclear translocation and activity of the cyclin D-CDK4 complex (PubMed:[9106657](#)). Exhibits transcriptional corepressor activity with INSM1 on the NEUROD1 and INS promoters in a cell cycle-independent manner (PubMed:[16569215](#), PubMed:[18417529](#)).

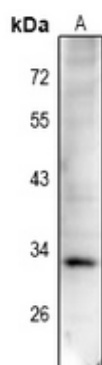
Cellular Location

Nucleus. Cytoplasm. Nucleus membrane. Note=Cyclin D-CDK4 complexes accumulate at the nuclear membrane and are then translocated to the nucleus through interaction with KIP/CIP family members

Background

KLH-conjugated synthetic peptide encompassing a sequence within the C-term region of human Cyclin D1. The exact sequence is proprietary.

Images



Western blot analysis of Cyclin D1 (pT288) expression in HCT116 (A) whole cell lysates.

Please note: All products are 'FOR RESEARCH USE ONLY. NOT FOR USE IN DIAGNOSTIC OR THERAPEUTIC PROCEDURES'.