

# Anti-CD91 (pS4520) Antibody

Rabbit polyclonal antibody to CD91 (pS4520)

Catalog # AP61095

## Product Information

---

Application	WB
Primary Accession	<a href="#">Q07954</a>
Other Accession	<a href="#">Q91ZX7</a>
Reactivity	Human, Mouse, Rat
Host	Rabbit
Clonality	Polyclonal
Calculated MW	504606

## Additional Information

---

Gene ID	4035
Other Names	A2MR; APR; Prolow-density lipoprotein receptor-related protein 1; LRP-1; Alpha-2-macroglobulin receptor; A2MR; Apolipoprotein E receptor; APOER; CD91
Target/Specificity	KLH-conjugated synthetic peptide encompassing a sequence within the C-term region of human CD91. The exact sequence is proprietary.
Dilution	WB~~WB (1/500 - 1/1000)
Format	Liquid in 0.42% Potassium phosphate, 0.87% Sodium chloride, pH 7.3, 30% glycerol, and 0.09% (W/V) sodium azide.
Storage	Store at -20 °C.Stable for 12 months from date of receipt

## Protein Information

---

Name	LRP1 ( <a href="#">HGNC:6692</a> )
Synonyms	A2MR, APR
Function	Endocytic receptor involved in endocytosis and in phagocytosis of apoptotic cells (PubMed: <a href="#">11907044</a> , PubMed: <a href="#">12713657</a> ). Required for early embryonic development (By similarity). Involved in cellular lipid homeostasis. Involved in the plasma clearance of chylomicron remnants and activated LRPAP1 (alpha 2-macroglobulin), as well as the local metabolism of complexes between plasminogen activators and their endogenous inhibitors. Acts as an LRPAP1 alpha-2- macroglobulin receptor (PubMed: <a href="#">1702392</a> , PubMed: <a href="#">26142438</a> ). Acts as TAU/MAPT receptor and controls the endocytosis of TAU/MAPT as well as its subsequent spread (PubMed: <a href="#">32296178</a> ). May modulate cellular events, such as APP metabolism, kinase-dependent intracellular signaling, neuronal

calcium signaling as well as neurotransmission (PubMed:[12888553](#)). Also acts as a receptor for IGFBP3 to mediate cell growth inhibition (PubMed:[9252371](#)).

## Cellular Location

[Low-density lipoprotein receptor-related protein 1 85 kDa subunit]: Cell membrane; Single-pass type I membrane protein Membrane, coated pit  
[Low-density lipoprotein receptor-related protein 1 intracellular domain]: Cytoplasm Nucleus. Note=After cleavage, the intracellular domain (LRP1CD) is detected both in the cytoplasm and in the nucleus.

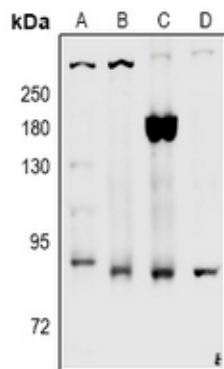
## Tissue Location

Most abundant in liver, brain and lung.

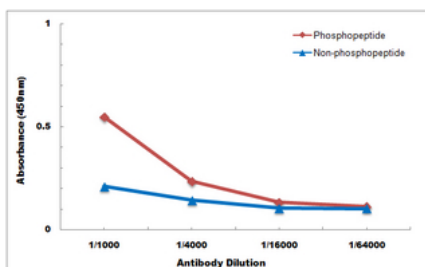
## Background

KLH-conjugated synthetic peptide encompassing a sequence within the C-term region of human CD91. The exact sequence is proprietary.

## Images



Western blot analysis of CD91 (pS4520) expression in rat brain (A), C6 (B), LO2 (C), HEK293T (D) whole cell lysates.



Direct ELISA antibody dose-response curve using Anti-CD91 (pS4520) Antibody. Antigen (phosphopeptide and non-phosphopeptide) concentration is 5 ug/ml. Goat Anti-Rabbit IgG (H&L) - HRP was used as the secondary antibody, and signal was developed by TMB substrate.

Please note: All products are 'FOR RESEARCH USE ONLY. NOT FOR USE IN DIAGNOSTIC OR THERAPEUTIC PROCEDURES'.