

# Anti-IGFBP3 (pS183) Antibody

Rabbit polyclonal antibody to IGFBP3 (pS183)

Catalog # AP61078

## Product Information

Application	WB, IHC
Primary Accession	<a href="#">P17936</a>
Reactivity	Human, Pig, Bovine
Host	Rabbit
Clonality	Polyclonal
Calculated MW	31674

## Additional Information

Gene ID	3486
Other Names	IBP3; Insulin-like growth factor-binding protein 3; IBP-3; IGF-binding protein 3; IGFBP-3
Target/Specificity	Recognizes endogenous levels of IGFBP3 (pS183) protein.
Dilution	WB~~WB (1/500 - 1/1000), IHC (1/50 - 1/100) IHC~~WB (1/500 - 1/1000), IHC (1/50 - 1/100)
Format	Liquid in 0.42% Potassium phosphate, 0.87% Sodium chloride, pH 7.3, 30% glycerol, and 0.09% (W/V) sodium azide.
Storage	Store at -20 °C.Stable for 12 months from date of receipt

## Protein Information

Name	IGFBP3
Synonyms	IBP3
Function	Multifunctional protein that plays a critical role in regulating the availability of IGFs such as IGF1 and IGF2 to their receptors and thereby regulates IGF-mediated cellular processes including proliferation, differentiation, and apoptosis in a cell-type specific manner (PubMed: <a href="#">10874028</a> , PubMed: <a href="#">19556345</a> ). Also exhibits IGF- independent antiproliferative and apoptotic effects mediated by its receptor TMEM219/IGFBP-3R (PubMed: <a href="#">20353938</a> ). Inhibits the positive effect of humanin on insulin sensitivity (PubMed: <a href="#">19623253</a> ). Promotes testicular germ cell apoptosis (PubMed: <a href="#">19952275</a> ). Acts via LRP- 1/alpha2M receptor, also known as TGF-beta type V receptor, to mediate cell growth inhibition independent of IGF1 (PubMed: <a href="#">9252371</a> ). Mechanistically, induces serine-specific dephosphorylation of IRS1 or IRS2 upon ligation to its receptor, leading to the

inhibitory cascade (PubMed:[15371331](#)). In the nucleus, interacts with transcription factors such as retinoid X receptor-alpha/RXRA to regulate transcriptional signaling and apoptosis (PubMed:[10874028](#)).

**Cellular Location**

Secreted. Nucleus

**Tissue Location**

Expressed by most tissues. Present in plasma.

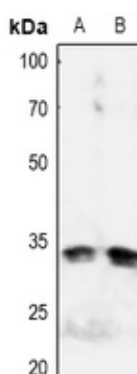
## Background

---

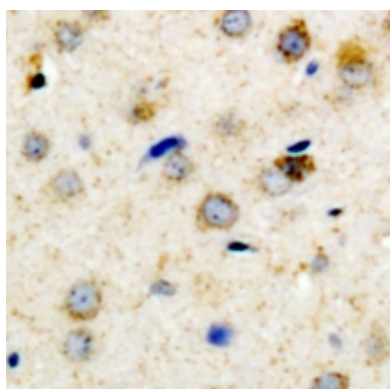
KLH-conjugated synthetic peptide encompassing a sequence within the center region of human IGFBP3. The exact sequence is proprietary.

## Images

---



Western blot analysis of IGFBP3 (pS183) expression in HeLa (A), HEK293T (B) whole cell lysates.



Immunohistochemical analysis of IGFBP3 (pS183) staining in human brain formalin fixed paraffin embedded tissue section. The section was pre-treated using heat mediated antigen retrieval with sodium citrate buffer (pH 6.0). The section was then incubated with the antibody at room temperature and detected using an HRP conjugated compact polymer system. DAB was used as the chromogen. The section was then counterstained with haematoxylin and mounted with DPX.

Please note: All products are 'FOR RESEARCH USE ONLY. NOT FOR USE IN DIAGNOSTIC OR THERAPEUTIC PROCEDURES'.