

# Anti-FOSB (pS27) Antibody

Rabbit polyclonal antibody to FOSB (pS27)

Catalog # AP61074

## Product Information

Application	WB, IF/IC, IHC
Primary Accession	<a href="#">P53539</a>
Other Accession	<a href="#">P13346</a>
Reactivity	Human, Mouse
Host	Rabbit
Clonality	Polyclonal
Calculated MW	35928

## Additional Information

Gene ID	2354
Other Names	G0S3; Protein fosB; G0/G1 switch regulatory protein 3
Target/Specificity	KLH-conjugated synthetic peptide encompassing a sequence within the N-term region of human FOSB. The exact sequence is proprietary.
Dilution	WB~~WB (1/500 - 1/1000), IHC (1/50 - 1/100), IF/IC (1/100 - 1/500) IF/IC~~N/A IHC~~WB (1/500 - 1/1000), IHC (1/50 - 1/100), IF/IC (1/100 - 1/500)
Format	Liquid in 0.42% Potassium phosphate, 0.87% Sodium chloride, pH 7.3, 30% glycerol, and 0.09% (W/V) sodium azide.
Storage	Store at -20 °C.Stable for 12 months from date of receipt

## Protein Information

Name	FOSB
Synonyms	G0S3
Function	Heterodimerizes with proteins of the JUN family to form an AP-1 transcription factor complex, thereby enhancing their DNA binding activity to gene promoters containing an AP-1 consensus sequence 5'- TGA[GC]TCA-3' and enhancing their transcriptional activity (PubMed: <a href="#">12618758</a> , PubMed: <a href="#">28981703</a> ). As part of the AP-1 complex, facilitates enhancer selection together with cell-type-specific transcription factors by collaboratively binding to nucleosomal enhancers and recruiting the SWI/SNF (BAF) chromatin remodeling complex to establish accessible chromatin (By similarity). Together with JUN, plays a role in activation-induced cell death of T cells by binding to the AP-1 promoter site of FASLG/CD95L, and inducing its transcription in response to activation of the TCR/CD3 signaling pathway

(PubMed:[12618758](#)). Exhibits transactivation activity in vitro (By similarity). Involved in the display of nurturing behavior towards newborns (By similarity). May play a role in neurogenesis in the hippocampus and in learning and memory-related tasks by regulating the expression of various genes involved in neurogenesis, depression and epilepsy (By similarity). Implicated in behavioral responses related to morphine reward and spatial memory (By similarity).

#### Cellular Location

Nucleus {ECO:0000250|UniProtKB:P13346}.

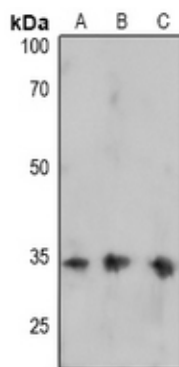
#### Tissue Location

[Isoform 11]: Expressed in the nucleus accumbens of the striatum (at protein level).

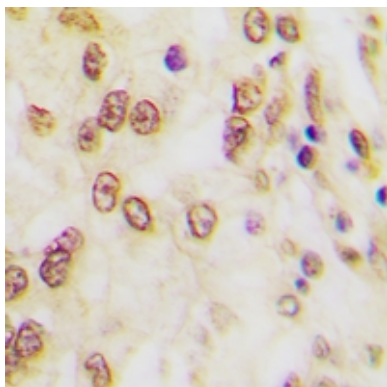
## Background

KLH-conjugated synthetic peptide encompassing a sequence within the N-term region of human FOSB. The exact sequence is proprietary.

## Images



Western blot analysis of FOSB (pS27) expression in HeLa (A), U87MG (B), PC3 (C) whole cell lysates.



Immunohistochemical analysis of FOSB (pS27) staining in human lung cancer formalin fixed paraffin embedded tissue section. The section was pre-treated using heat mediated antigen retrieval with sodium citrate buffer (pH 6.0). The section was then incubated with the antibody at room temperature and detected using an HRP conjugated compact polymer system. DAB was used as the chromogen. The section was then counterstained with haematoxylin and mounted with DPX.



Immunofluorescent analysis of FOSB (pS27) staining in HepG2 cells. Formalin-fixed cells were permeabilized with 0.1% Triton X-100 in TBS for 5-10 minutes and blocked with 3% BSA-PBS for 30 minutes at room temperature. Cells were probed with the primary antibody in 3% BSA-PBS and incubated overnight at 4 °C in a humidified chamber. Cells were washed with PBST and incubated with Alexa Fluor 647-conjugated secondary antibody (red) in PBS at room temperature in the dark.

Please note: All products are 'FOR RESEARCH USE ONLY. NOT FOR USE IN DIAGNOSTIC OR THERAPEUTIC PROCEDURES'.