

# Anti-ADAM10 Antibody

Rabbit polyclonal antibody to ADAM10  
Catalog # AP61040

## Product Information

---

<b>Application</b>	WB
<b>Primary Accession</b>	<a href="#">O14672</a>
<b>Other Accession</b>	<a href="#">O35598</a>
<b>Reactivity</b>	Human, Mouse, Rat
<b>Host</b>	Rabbit
<b>Clonality</b>	Polyclonal

## Additional Information

---

<b>Other Names</b>	KUZ; MADM; Disintegrin and metalloproteinase domain-containing protein 10; ADAM 10; CDw156; Kuzbanian protein homolog; Mammalian disintegrin-metalloprotease; CD156c
<b>Target/Specificity</b>	KLH-conjugated synthetic peptide encompassing a sequence within the center region of human ADAM10. The exact sequence is proprietary.
<b>Dilution</b>	WB--WB (1/500 - 1/1000)
<b>Format</b>	Liquid in 0.42% Potassium phosphate, 0.87% Sodium chloride, pH 7.3, 30% glycerol, and 0.09% (W/V) sodium azide.
<b>Storage</b>	Store at -20 °C. Stable for 12 months from date of receipt

## Protein Information

---

### Background

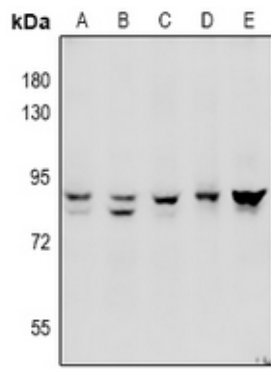
---

KLH-conjugated synthetic peptide encompassing a sequence within the center region of human ADAM10. The exact sequence is proprietary.

### Images

---

Western blot analysis of ADAM10 expression in HepG2 (A), U87MG (B), A549 (C), SP20 (D), PC12 (E) whole cell lysates.



Please note: All products are 'FOR RESEARCH USE ONLY. NOT FOR USE IN DIAGNOSTIC OR THERAPEUTIC PROCEDURES'.